



**VELTEN BPI 00**  
Printing support



**NAHIA CURRY 184**  
Print pattern

## Printing support **VELTEN BPI 00** Print pattern **NAHIA CURRY 184**

Unclassified velvet print support with acrylic coating

### Technical properties

**Applications** Roman blinds - Panel curtains - Curtains

**Composition** 100% ungraded polyester with white flocked acrylic backing

**Weight** 390 g/m<sup>2</sup> 1014 g/m<sup>2</sup>

**Width** 260 cm

**Fabric direction** Standard Direction

**Fitting** ↔ 64.0 cm ↓ 70.0 cm

**Maintenance advice**     

**Label** OEKO-TEX STANDARD 100

**Minimum order** 25 linear(s) meter(s)



Visual not taking into account the printing medium, the final rendering may vary according to the chosen medium.

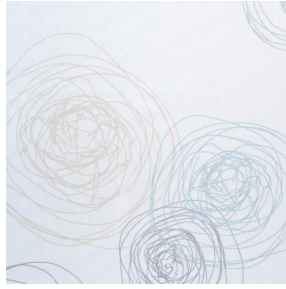
## Technical characteristics

Resilience	Lightfastness (units Class/8)	<b>4</b>
	Dimensional Stability (%)	
	Warp	<b>-1</b>
	Weft	<b>0</b>
	Breaking Elongation	
	Warp	<b>69</b>
	Weft	<b>106</b>
	Breaking load (daN)	
	Warp	<b>52</b>
	Weft	<b>41</b>

# Print pattern NAHIA



NAHIA TURQUOISE 53



NAHIA OR 94