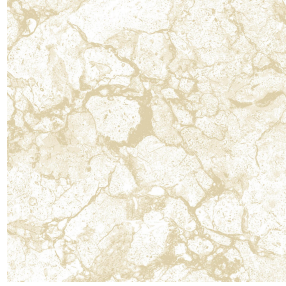




**VELTEN BPI 00**  
Printing support



**CARRARA Naturel 26**  
Print pattern



## Printing support **VELTEN BPI 00** Print pattern **CARRARA Naturel 26**

Unclassified velvet print support with acrylic coating

### Technical properties

**Applications** Roman blinds - Panel curtains - Curtains

**Composition** 100% ungraded polyester with white flocked acrylic backing

**Weight** 390 g/m<sup>2</sup>

**Width** 260 cm

**Fabric direction** Standard Direction

**Fitting** ↔ 0.0 cm ↑ 0.0 cm

**Maintenance advice**     

**Label**

**Minimum order** 25 linear(s) meter(s)



Visual not taking into account the printing medium, the final rendering may vary according to the chosen medium.

## Technical characteristics

Resilience

Lightfastness (units Class/8)

4

Dimensional Stability (%)

Warp

-1

Weft

0

Breaking Elongation

Warp

69

Weft

106

Breaking load (daN)

Warp

52

Weft

41

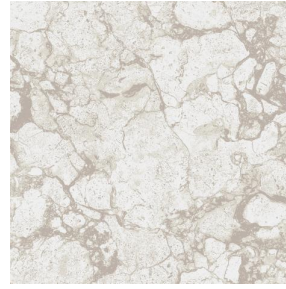
# Print pattern CARRARA



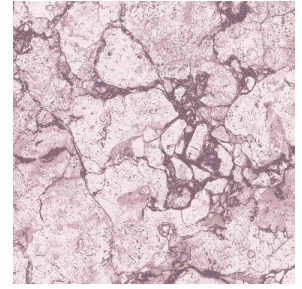
CARRARA Céladon 135



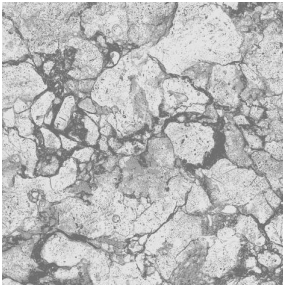
CARRARA Perle 96



CARRARA Lin 11



CARRARA Vieux rose 64



CARRARA Gris 97



CARRARA Ficelle 09



CARRARA Chamois 111



CARRARA Absinthe 132

**drapilux**  
By Sotexpro

DRAPILUX GmbH - Hafenstraße 3, 77694 Kehl - Deutschland

Non-contractual photos and colors - Indicative fitting - Fitting may vary depending on support selected