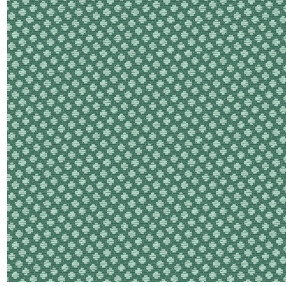
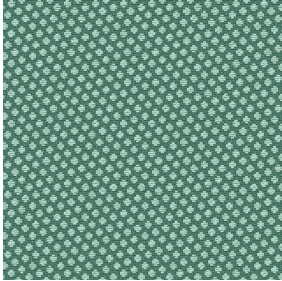




VELTEN BPI 00  
Printing support



GONIDIE Céladon 135  
Print pattern



## Printing support **VELTEN BPI 00** Print pattern **GONIDIE Céladon 135**

Unclassified velvet print support with acrylic coating

### Technical properties

**Applications** Roman blinds - Panel curtains - Curtains


**Composition** 100% ungraded polyester with white flocked acrylic backing

**Weight** 390 g/m<sup>2</sup>

**Width** 260 cm

**Fabric direction** Standard Direction

**Fitting** ↔ 0.0 cm ↑ 0.0 cm

**Maintenance advice**     

**Label**

**Minimum order** 25 linear(s) meter(s)



Visual not taking into account the printing medium, the final rendering may vary according to the chosen medium.

## Technical characteristics

Resilience

Lightfastness (units Class/8)

4

Dimensional Stability (%)

Warp

-1

Weft

0

Breaking Elongation

Warp

69

Weft

106

Breaking load (daN)

Warp

52

Weft

41

# Print pattern GONIDIE



GONIDIE Souris 31



GONIDIE Beige 63



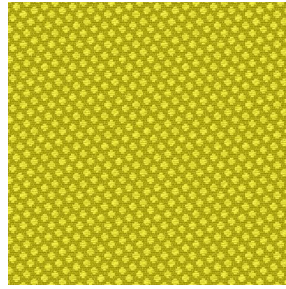
GONIDIE Citrouille 136



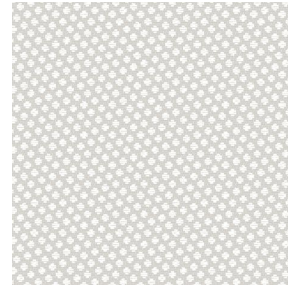
GONIDIE Glacier 43



GONIDIE Noir 10



GONIDIE Anis 62



GONIDIE Perle 96



GONIDIE Mousse 92



GONIDIE Tourterelle  
138



GONIDIE Brique 42



GONIDIE Opéra 104



GONIDIE Pacifique 54



GONIDIE Brun 23



GONIDIE Crème 32



GONIDIE Taupe 95



GONIDIE Lin 11



GONIDIE Lierre 124



GONIDIE Bergamote  
121



GONIDIE Hortensia 134



GONIDIE Vieux rose 64

**drapilux**  
By Sotexpro

DRAPILUX GmbH - Hofenstraße 3, 77694 Kehl - Deutschland

Non-contractual photos and colors - Indicative fitting - Fitting may vary depending on support selected

## Print pattern GONIDIE



GONIDIE Emeraude 88



GONIDIE Fuchsia 33



GONIDIE Ebene 113



GONIDIE Ficelle 09