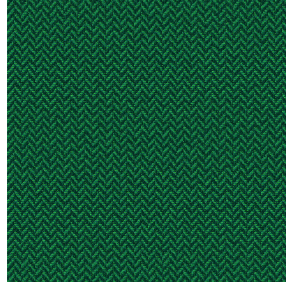




VEGA 00 BPI 00
Printing support



SCOURTIN Sapin 126
Print pattern



Visual not taking into account the printing medium, the final rendering may vary according to the chosen medium.

Printing support **VEGA 00 BPI 00** Print pattern **SCOURTIN Sapin 126**

Blackout print support with velvet look

Technical properties



Flame retardant

Applications Roman blinds - Panel curtains - Curtains

Composition 100% polyester with white flocked acrylic backing

Weight 390 g/m²

Width 260 cm

Fabric direction Room High Direction

Fitting ↔ cm ↓ cm

Maintenance advice     

Label

Minimum order 25 linear(s) meter(s)

Technical characteristics

Flame retardant

EN13773 : 2003 Class 1 / BS 5867 TYPE B / B1 / IMO PASS

Resilience

Lightfastness (units Class/8)

4

Dimensional Stability (%)

Warp

-1

Weft

0

Breaking Elongation

Warp

69

Weft

106

Breaking load (daN)

Warp

52

Weft

41

Print pattern SCOURTIN



SCOURTIN Beige 63



SCOURTIN Fuchsia 33



SCOURTIN Bergamote
121



SCOURTIN Anthracite
38



SCOURTIN Violine 105



SCOURTIN Pacifique 54



SCOURTIN Rose 129



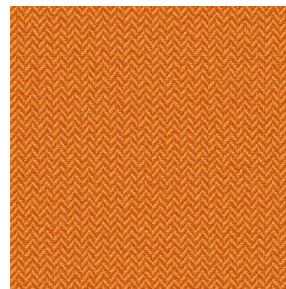
SCOURTIN Blanc 01



SCOURTIN Lin 11



SCOURTIN Naturel 26



SCOURTIN Citrouille
136



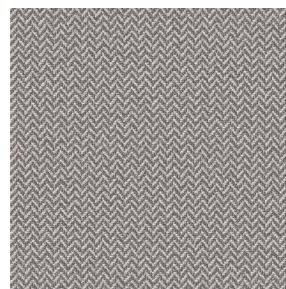
SCOURTIN Turquoise 53



SCOURTIN Brun 23



SCOURTIN Hortensia
134



SCOURTIN Orage 123



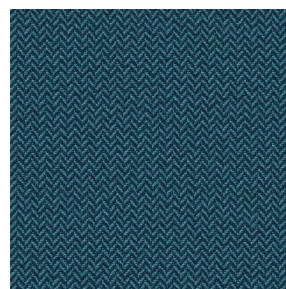
SCOURTIN Rubis 59



SCOURTIN Ficelle 09



SCOURTIN Maïs 37



SCOURTIN Céladon 135



SCOURTIN Ebene 113

drapilux
By Sotexpro

DRAPILUX GmbH - Hofenstraße 3, 77694 Kehl - Deutschland

Non-contractual photos and colors - Indicative fitting - Fitting may vary depending on support selected

Print pattern SCOURTIN



SCOURTIN Tourterelle
138



SCOURTIN Titanium 98



SCOURTIN Lagon 110



SCOURTIN Gris 97