



VEGA 00 BPI 00
Printing support



RUSTIC Prairie 125
Print pattern



Printing support **VEGA 00 BPI 00** Print pattern **RUSTIC Prairie 125**

Blackout print support with velvet look

Technical properties



Flame retardant

Applications Roman blinds - Panel curtains - Curtains

Composition 100% polyester with white flocked acrylic backing

Weight 390 g/m²

Width 260 cm

Fabric direction Room High Direction

Fitting ↔ cm ↓ cm

Maintenance advice     

Label

Minimum order 25 linear(s) meter(s)



Visual not taking into account the printing medium, the final rendering may vary according to the chosen medium.

Technical characteristics

Flame retardant

EN13773 : 2003 Class 1 / BS 5867 TYPE B / B1 / IMO PASS

Resilience

Lightfastness (units Class/8) **4**

Dimensional Stability (%)

Warp **-1**

Weft **0**

Breaking Elongation

Warp **69**

Weft **106**

Breaking load (daN)

Warp **52**

Weft **41**

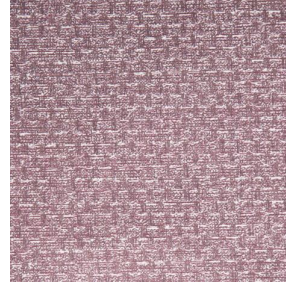
Print pattern RUSTIC



RUSTIC Lin 11



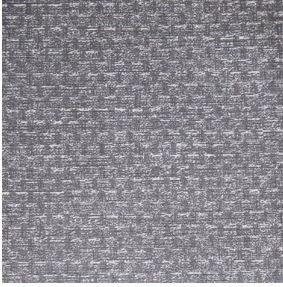
RUSTIC Naturel 26



RUSTIC Sienne 29



RUSTIC Terre 107



RUSTIC Taupe 95



RUSTIC Titanium 98



RUSTIC Hortensia 134



RUSTIC Bergamote 121



RUSTIC Mousse 92



RUSTIC Glacier 43



RUSTIC Bleu 41

drapilux
By Sotexpro

DRAPILUX GmbH - Hafenstraße 3, 77694 Kehl - Deutschland

Non-contractual photos and colors - Indicative fitting - Fitting may vary depending on support selected