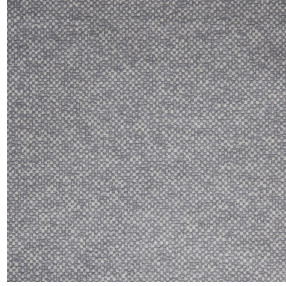




VEGA 00 BPI 00
Printing support



ANATOLE lin 11
Print pattern



Printing support **VEGA 00 BPI 00** Print pattern **ANATOLE lin 11**

Blackout print support with velvet look

Technical properties



Flame retardant

Applications Roman blinds - Panel curtains - Curtains

Composition 100% polyester with white flocked acrylic backing

Weight 390 g/m²

Width 260 cm

Fabric direction Room High Direction

Fitting ↔ cm ↓ cm

Maintenance advice     

Label

Minimum order 1 linear(s) meter(s)



Visual not taking into account the printing medium, the final rendering may vary according to the chosen medium.

Technical characteristics

Flame retardant

EN13773 : 2003 Class 1 / BS 5867 TYPE B / B1 / IMO PASS

Resilience

Lightfastness (units Class/8)

4

Dimensional Stability (%)

Warp

-1

Weft

0

Breaking Elongation

Warp

69

Weft

106

Breaking load (daN)

Warp

52

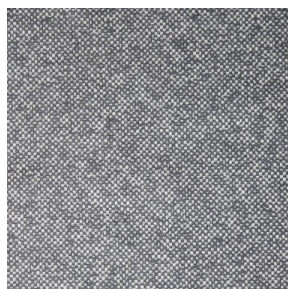
Weft

41

Print pattern ANATOLE



ANATOLE Naturel 26



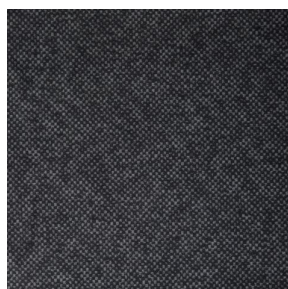
ANATOLE Ficelle 09



ANATOLE Celadon 135



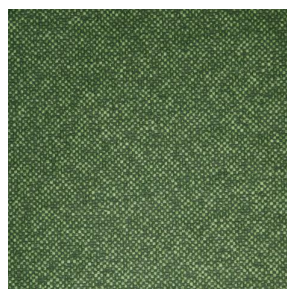
ANATOLE Océan 91



ANATOLE Titanium 98



ANATOLE Cactus 36



ANATOLE mousse 92



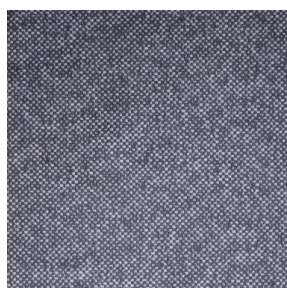
ANATOLE Or 94



ANATOLE Chaudron
118



ANATOLE Amarante
108



ANATOLE Taupe 95