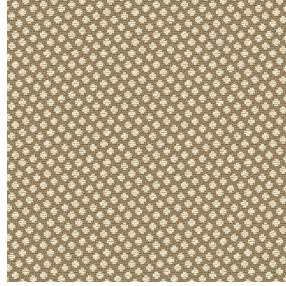




VEGA 00 BPI 00
Printing support



GONIDIE Beige 63
Print pattern



Printing support **VEGA 00 BPI 00** Print pattern **GONIDIE Beige 63**

Blackout print support with velvet look

Technical properties



Flame retardant

Applications Roman blinds - Panel curtains - Curtains

Composition 100% polyester with white flocked acrylic backing

Weight 390 g/m²

Width 260 cm

Fabric direction Room High Direction

Fitting ↔ 0.0 cm ↓ 0.0 cm

Maintenance advice     

Label

Minimum order 25 linear(s) meter(s)



Visual not taking into account the printing medium, the final rendering may vary according to the chosen medium.

Technical characteristics

Flame retardant

EN13773 : 2003 Class 1 / BS 5867 TYPE B / B1 / IMO PASS

Resilience

Lightfastness (units Class/8)

4

Dimensional Stability (%)

Warp

-1

Weft

0

Breaking Elongation

Warp

69

Weft

106

Breaking load (daN)

Warp

52

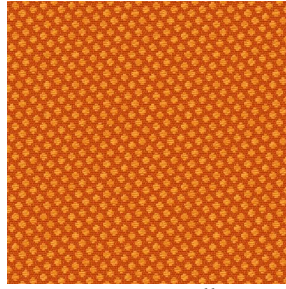
Weft

41

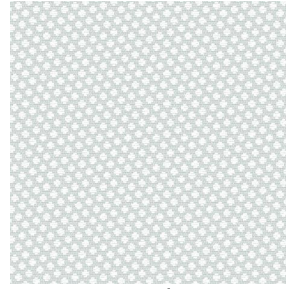
Print pattern GONIDIE



GONIDIE Souris 31



GONIDIE Citrouille 136



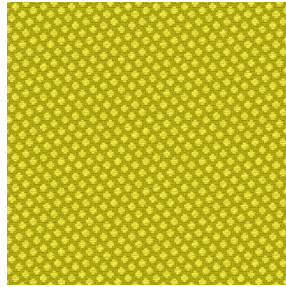
GONIDIE Glacier 43



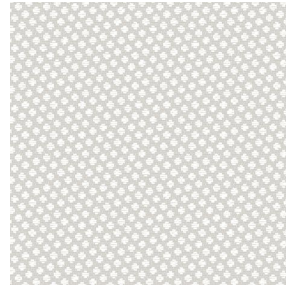
GONIDIE Noir 10



GONIDIE Céladon 135



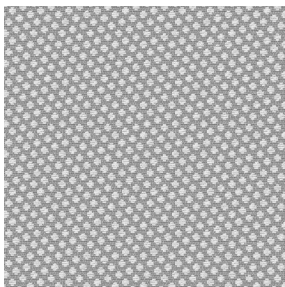
GONIDIE Anis 62



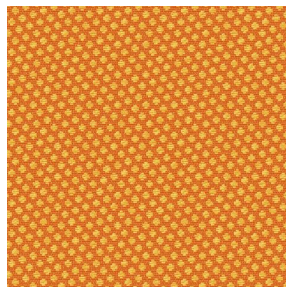
GONIDIE Perle 96



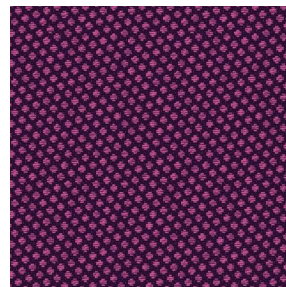
GONIDIE Mousse 92



GONIDIE Tourterelle
138



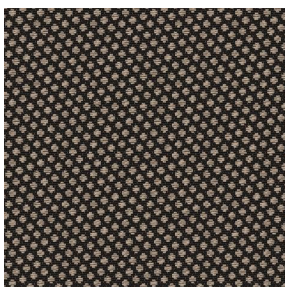
GONIDIE Brique 42



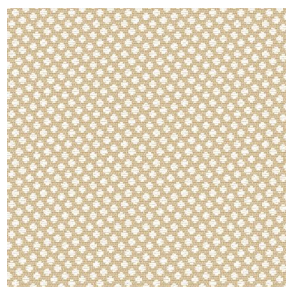
GONIDIE Opéra 104



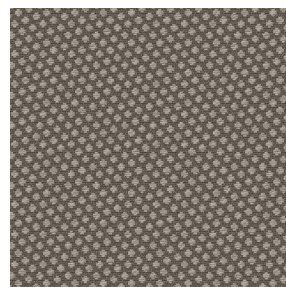
GONIDIE Pacifique 54



GONIDIE Brun 23



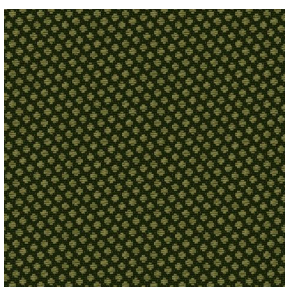
GONIDIE Crème 32



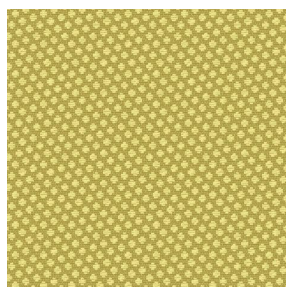
GONIDIE Taupe 95



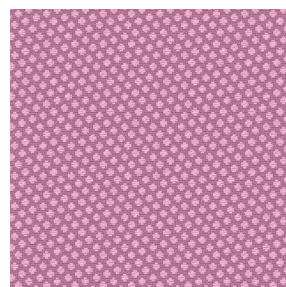
GONIDIE Lin 11



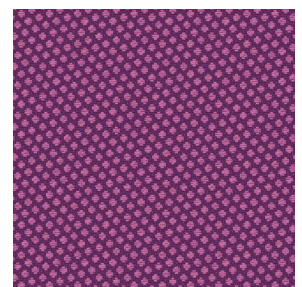
GONIDIE Lierre 124



GONIDIE Bergamote
121



GONIDIE Hortensia 134



GONIDIE Vieux rose 64

drapilux
By Sotexpro

DRAPILUX GmbH - Hofenstraße 3, 77694 Kehl - Deutschland

Non-contractual photos and colors - Indicative fitting - Fitting may vary depending on support selected

Print pattern GONIDIE



GONIDIE Emeraude 88



GONIDIE Fuchsia 33



GONIDIE Ebene 113



GONIDIE Ficelle 09