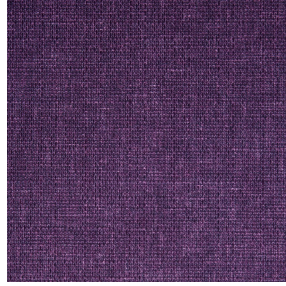
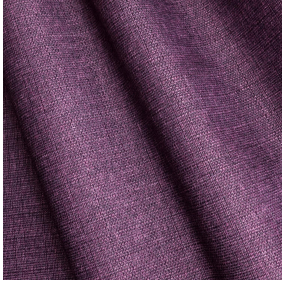




**TAO BPI 00**  
Printing support



**MUNA Saphir 106**  
Print pattern



## Printing support **TAO BPI 00** Print pattern **MUNA Saphir 106**

Unclassified velvet print support with acrylic coating

**Applications** Roman blinds - Panel curtains - Curtains

**Composition** 100% ungraded polyester

**Weight** 465 g/m<sup>2</sup>

**Width** 132 cm

**Fabric direction** Standard Direction

**Fitting** ↔ cm ↓ cm

**Maintenance advice**     

**Label**

**Minimum order** 25 linear(s) meter(s)



Visual not taking into account the printing medium, the final rendering may vary according to the chosen medium.

## Technical characteristics

Resilience

Lightfastness (units Class/8)

**5**

Pilling

**5**

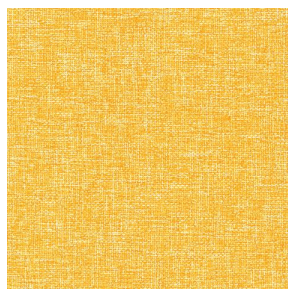
Martindale (Cycles)

**60000**

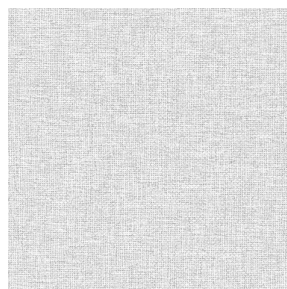
# Print pattern MUNA



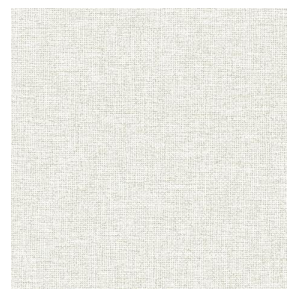
MUNA Cactus 36



MUNA soleil 90



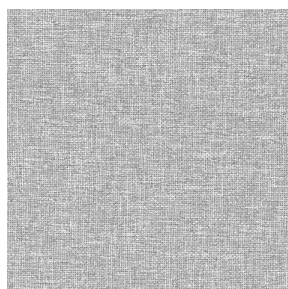
MUNA gris 97



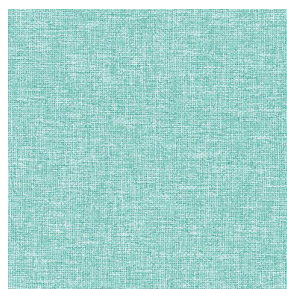
MUNA lin 11



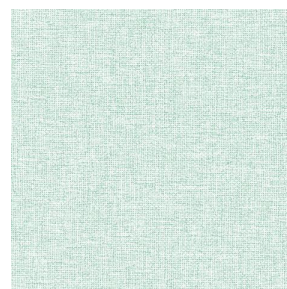
MUNA Melon 22



MUNA souris 31



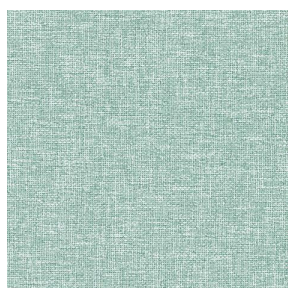
MUNA lagon 110



MUNA jade 116



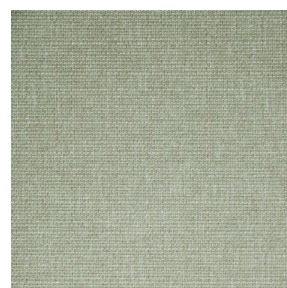
MUNA terre 107



MUNA céladon 135



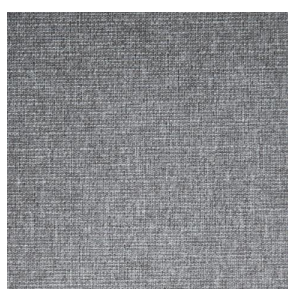
MUNA Coco 142



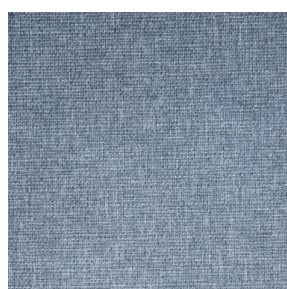
MUNA Sable 67



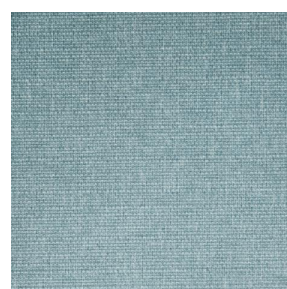
MUNA Saumon 143



MUNA Sisal 140



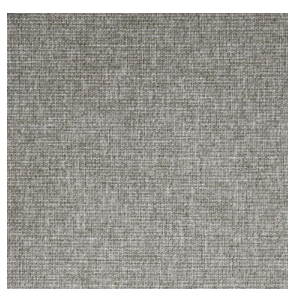
MUNA Tourterelle 138



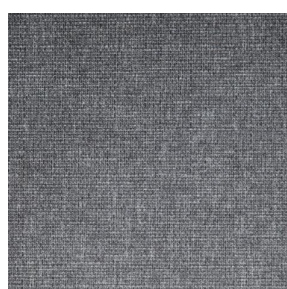
MUNA Ardoise 87



MUNA Tilleul 103



MUNA Chanvre 72



MUNA Graphite 77



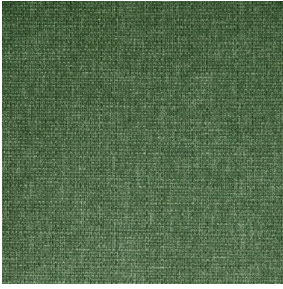
MUNA Olive 61

**drapilux**  
By Sotexpro

DRAPILUX GmbH - Hafenstraße 3, 77694 Kehl - Deutschland

Non-contractual photos and colors - Indicative fitting - Fitting may vary depending on support selected

# Print pattern MUNA



MUNA Lierre 124



MUNA Indigo 144



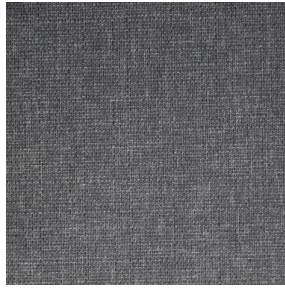
MUNA Sienne 29



MUNA Rouge 21



MUNA Violine 105



MUNA Titanium 98



MUNA Acier 18