



TAO BPI 00
Printing support



SCOURTIN Ebene 113
Print pattern



Printing support **TAO BPI 00** Print pattern **SCOURTIN Ebene 113**

Unclassified velvet print support with acrylic coating

Applications Roman blinds - Panel curtains - Curtains

Composition 100% ungraded polyester

Weight 465 g/m²

Width 132 cm

Fabric direction Standard Direction

Fitting ↔ cm ↓ cm

Maintenance advice     

Label

Minimum order 25 linear(s) meter(s)



Visual not taking into account the printing medium, the final rendering may vary according to the chosen medium.

Technical characteristics

Resilience	Lightfastness (units Class/8)	5
	Pilling	5
	Martindale (Cycles)	60000

Print pattern SCOURTIN



SCOURTIN Beige 63



SCOURTIN Fuchsia 33



SCOURTIN Sapin 126



SCOURTIN Bergamote
121



SCOURTIN Anthracite
38



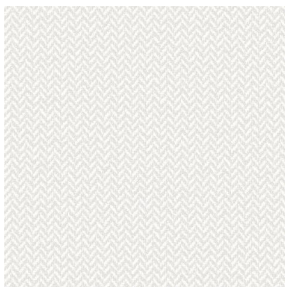
SCOURTIN Violine 105



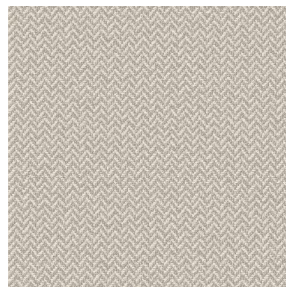
SCOURTIN Pacifique 54



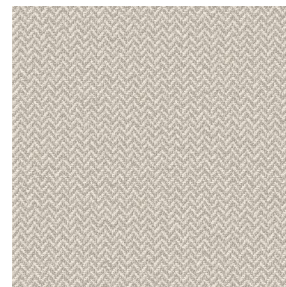
SCOURTIN Rose 129



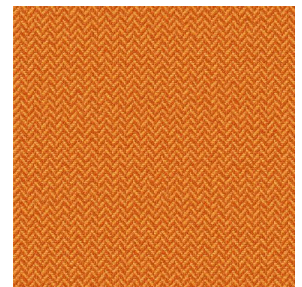
SCOURTIN Blanc 01



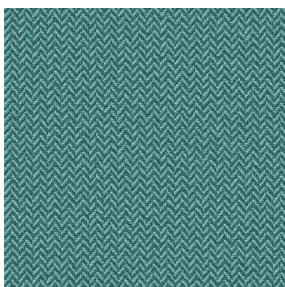
SCOURTIN Lin 11



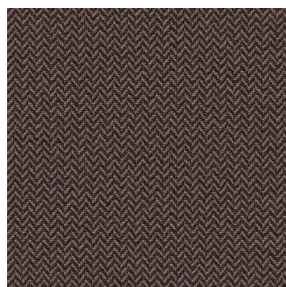
SCOURTIN Naturel 26



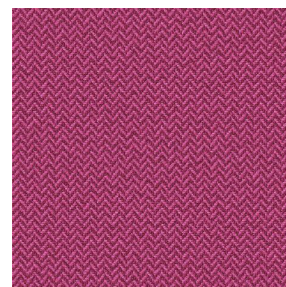
SCOURTIN Citrouille
136



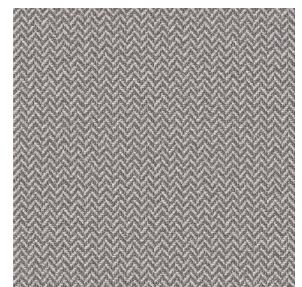
SCOURTIN Turquoise 53



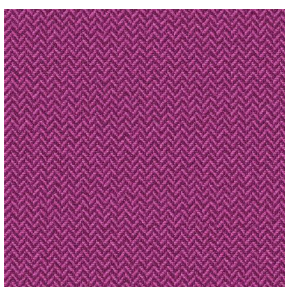
SCOURTIN Brun 23



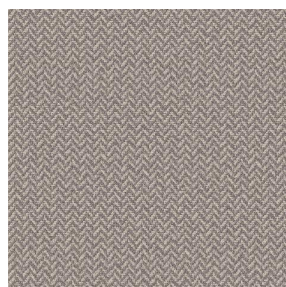
SCOURTIN Hortensia
134



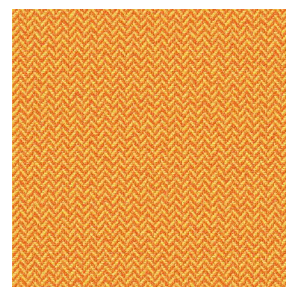
SCOURTIN Orage 123



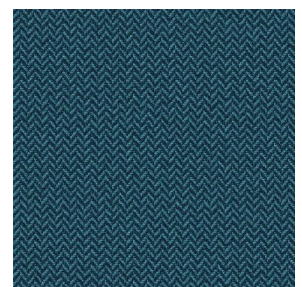
SCOURTIN Rubis 59



SCOURTIN Ficelle 09



SCOURTIN Maïs 37



SCOURTIN Céladon 135

drapilux
By Sotexpro

DRAPILUX GmbH - Hofenstraße 3, 77694 Kehl - Deutschland

Non-contractual photos and colors - Indicative fitting - Fitting may vary depending on support selected

Print pattern SCOURTIN



SCOURTIN Tourterelle
138



SCOURTIN Titanium 98



SCOURTIN Lagon 110



SCOURTIN Gris 97

drapilux
By Sotexpro

DRAPILUX GmbH - Hafenstraße 3, 77694 Kehl - Deutschland

Non-contractual photos and colors - Indicative fitting - Fitting may vary depending on support selected