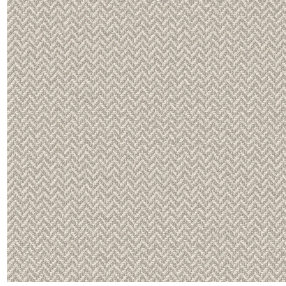




**TAO BPI 00**  
Printing support



**SCOURTIN Lin 11**  
Print pattern

## Printing support **TAO BPI 00** Print pattern **SCOURTIN Lin 11**

Unclassified velvet print support with acrylic coating

**Applications** Roman blinds - Panel curtains - Curtains

**Composition** 100% ungraded polyester

**Weight** 465 g/m<sup>2</sup>

**Width** 132 cm

**Fabric direction** Standard Direction

**Fitting** ↔ cm ↓ cm

**Maintenance advice**     

**Label**

**Minimum order** 25 linear(s) meter(s)



Visual not taking into account the printing medium, the final rendering may vary according to the chosen medium.

## Technical characteristics

---

Resilience

Lightfastness (units Class/8)

**5**

Pilling

**5**

Martindale (Cycles)

**60000**

# Print pattern SCOURTIN



SCOURTIN Beige 63



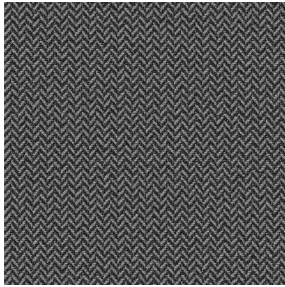
SCOURTIN Fuchsia 33



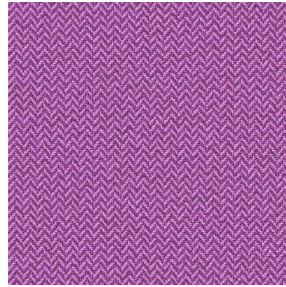
SCOURTIN Sapin 126



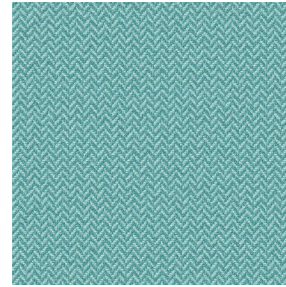
SCOURTIN Bergamote  
121



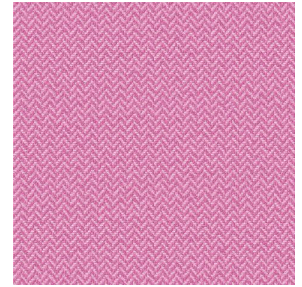
SCOURTIN Anthracite  
38



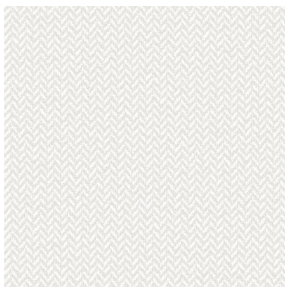
SCOURTIN Violette 105



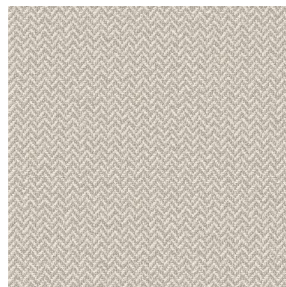
SCOURTIN Pacifique 54



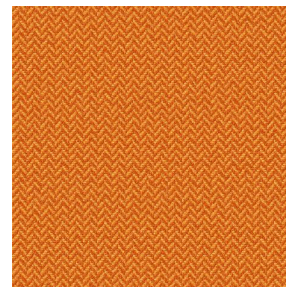
SCOURTIN Rose 129



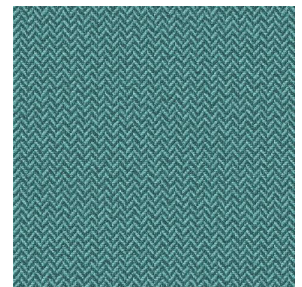
SCOURTIN Blanc 01



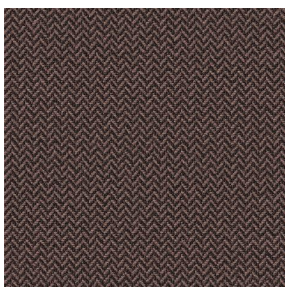
SCOURTIN Naturel 26



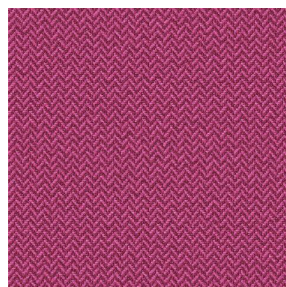
SCOURTIN Citrouille  
136



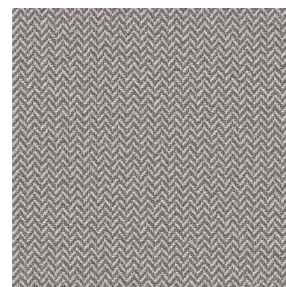
SCOURTIN Turquoise 53



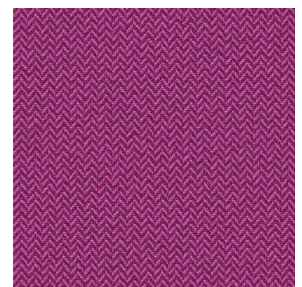
SCOURTIN Brun 23



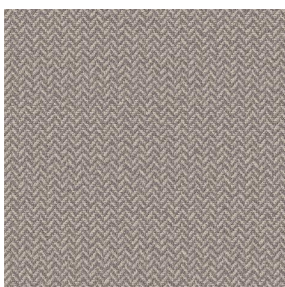
SCOURTIN Hortensia  
134



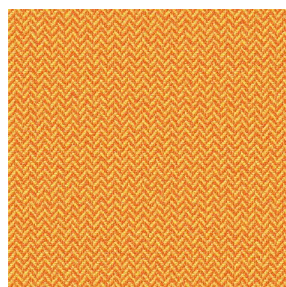
SCOURTIN Orage 123



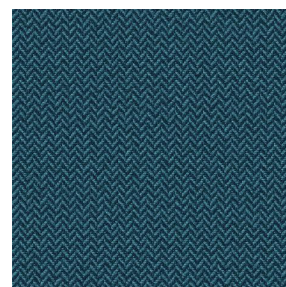
SCOURTIN Rubis 59



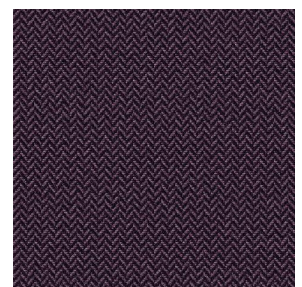
SCOURTIN Ficelle 09



SCOURTIN Maïs 37



SCOURTIN Céladon 135



SCOURTIN Ebene 113

**drapilux**  
By Sotexpro

DRAPILUX GmbH - Hofenstraße 3, 77694 Kehl - Deutschland

Non-contractual photos and colors - Indicative fitting - Fitting may vary depending on support selected

## Print pattern SCOURTIN



SCOURTIN Tourterelle  
138



SCOURTIN Titanium 98



SCOURTIN Lagon 110



SCOURTIN Gris 97