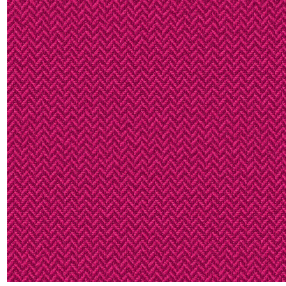




TAO BPI 00
Printing support



SCOURTIN Fuchsia 33
Print pattern



Visual not taking into account the printing medium, the final rendering may vary according to the chosen medium.

Printing support **TAO BPI 00** Print pattern **SCOURTIN Fuchsia 33**

Unclassified velvet print support with acrylic coating

Applications Roman blinds - Panel curtains - Curtains

Composition 100% ungraded polyester

Weight 465 g/m²

Width 132 cm

Fabric direction Standard Direction

Fitting ↔ cm ↓ cm

Maintenance advice     

Label

Minimum order 25 linear(s) meter(s)

Technical characteristics

Resilience

Lightfastness (units Class/8)

5

Pilling

5

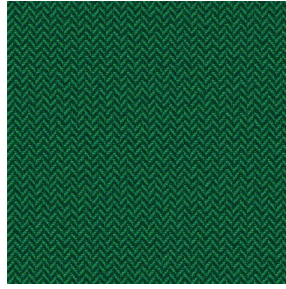
Martindale (Cycles)

60000

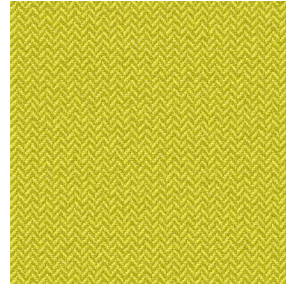
Print pattern SCOURTIN



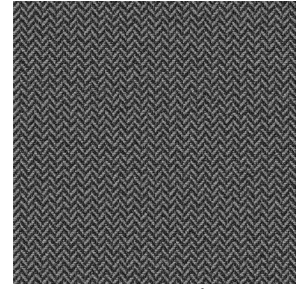
SCOURTIN Beige 63



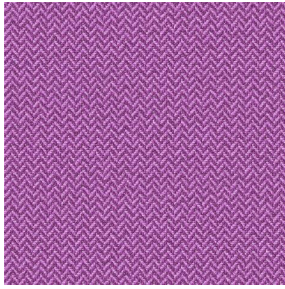
SCOURTIN Sapin 126



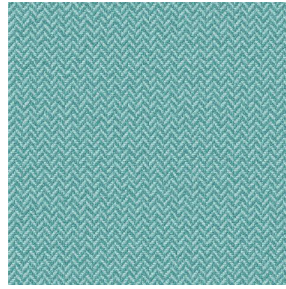
SCOURTIN Bergamote
121



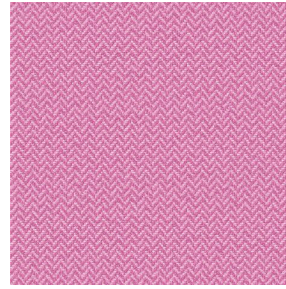
SCOURTIN Anthracite
38



SCOURTIN Violine 105



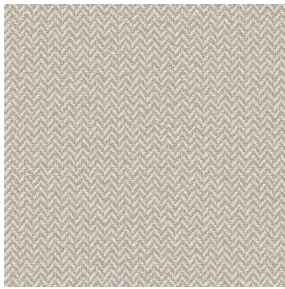
SCOURTIN Pacifique 54



SCOURTIN Rose 129



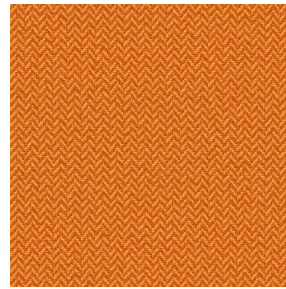
SCOURTIN Blanc 01



SCOURTIN Lin 11



SCOURTIN Naturel 26



SCOURTIN Citrouille
136



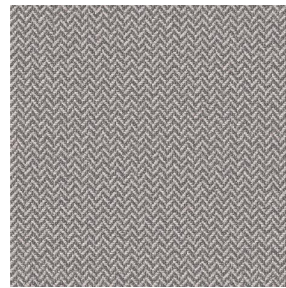
SCOURTIN Turquoise 53



SCOURTIN Brun 23



SCOURTIN Hortensia
134



SCOURTIN Orage 123



SCOURTIN Rubis 59



SCOURTIN Ficelle 09



SCOURTIN Maïs 37



SCOURTIN Céladon 135



SCOURTIN Ebene 113

drapilux
By Sotexpro

DRAPILUX GmbH - Hofenstraße 3, 77694 Kehl - Deutschland

Non-contractual photos and colors - Indicative fitting - Fitting may vary depending on support selected

Print pattern SCOURTIN



SCOURTIN Tourterelle
138



SCOURTIN Titanium 98



SCOURTIN Lagon 110



SCOURTIN Gris 97