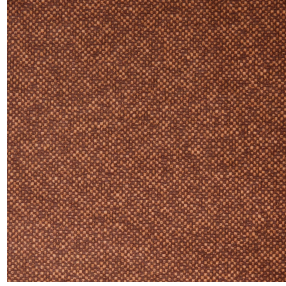




TAO BPI 00  
Printing support



ANATOLE Chaudron 118  
Print pattern



## Printing support **TAO BPI 00** Print pattern **ANATOLE Chaudron** **118**

Unclassified velvet print support with acrylic coating

**Applications** Roman blinds - Panel curtains - Curtains




**Composition** 100% ungraded polyester

**Weight** 465 g/m<sup>2</sup>

**Width** 132 cm

**Fabric direction** Standard Direction

**Fitting** ↔ cm ↓ cm

**Maintenance advice**     

**Label**

**Minimum order** 25 linear(s) meter(s)



Visual not taking into account the printing medium, the final rendering may vary according to the chosen medium.

## Technical characteristics

Resilience

Lightfastness (units Class/8)

5

Pilling

5

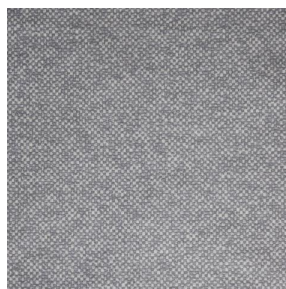
Martindale (Cycles)

60000

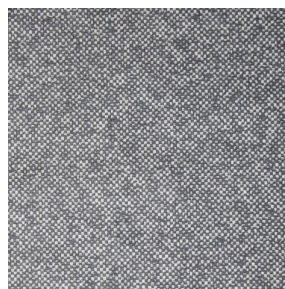
# Print pattern ANATOLE



ANATOLE Naturel 26



ANATOLE lin 11



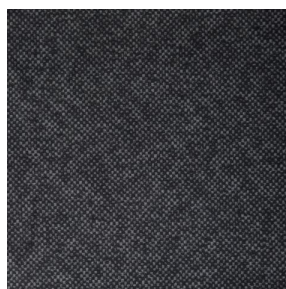
ANATOLE Ficelle 09



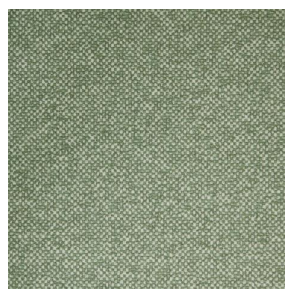
ANATOLE Celadon 135



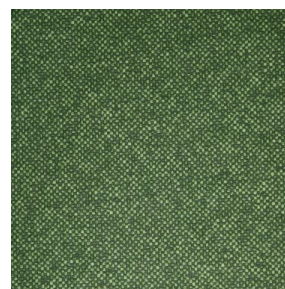
ANATOLE Océan 91



ANATOLE Titanium 98



ANATOLE Cactus 36



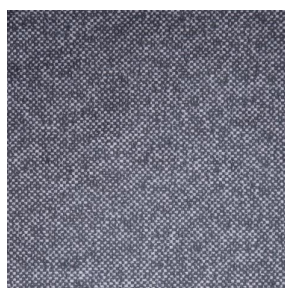
ANATOLE mousse 92



ANATOLE Or 94



ANATOLE Amarante  
108



ANATOLE Taupe 95