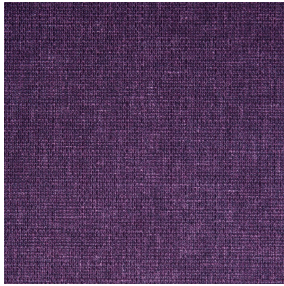
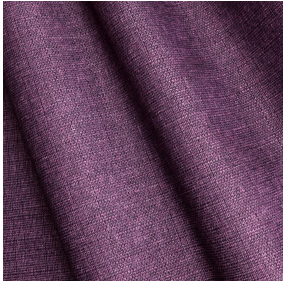




TAO BPI 00
Printing support



MUNA Saphir 106
Print pattern



Printing support **TAO BPI 00** Print pattern **MUNA Saphir 106**

Unclassified velvet print support with acrylic coating

Applications Roman blinds - Panel curtains - Curtains

Composition 100% ungraded polyester

Weight 465 g/m²

Width 132 cm


Fabric direction Standard Direction

Fitting ↔ cm ↓ cm

Maintenance advice     

Label

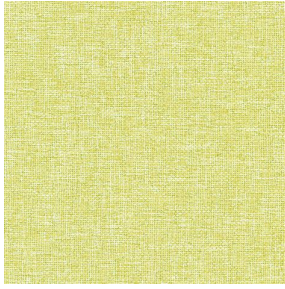
Minimum order 25 linear(s) metter(s)

 Visual not taking into account the printing medium, the final rendering may vary according to the chosen medium.

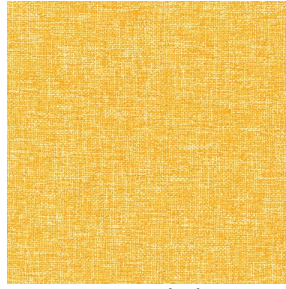
Technical characteristics

Resilience	Lightfastness (units Class/8)	5
	Pilling	5
	Martindale (Cycles)	60000

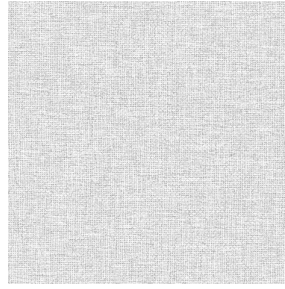
Print pattern MUNA



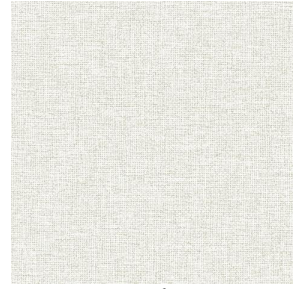
MUNA Cactus 36



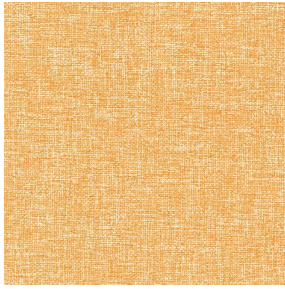
MUNA soleil 90



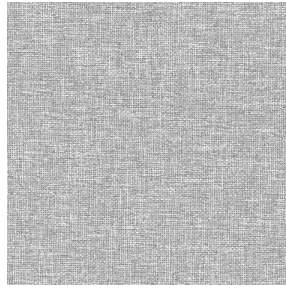
MUNA gris 97



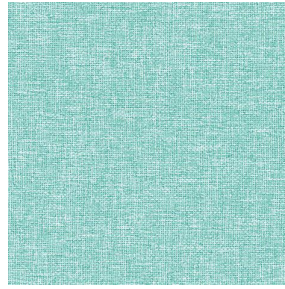
MUNA lin 11



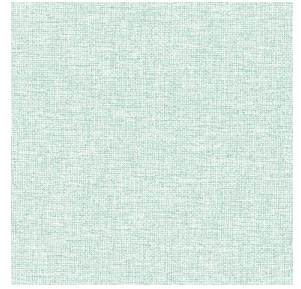
MUNA Melon 22



MUNA souris 31



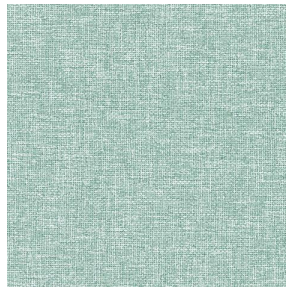
MUNA lagon 110



MUNA jade 116



MUNA terre 107



MUNA céladon 135



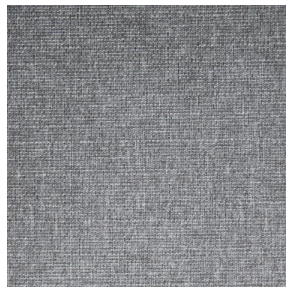
MUNA Coco 142



MUNA Sable 67



MUNA Saumon 143



MUNA Sisal 140



MUNA Tourterelle 138



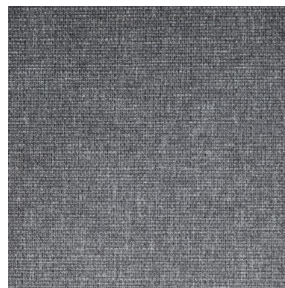
MUNA Ardoise 87



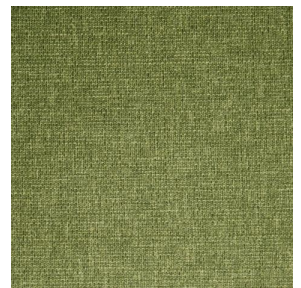
MUNA Tilleul 103



MUNA Chanvre 72



MUNA Graphite 77



MUNA Olive 61

drapilux
By Sotexpro

DRAPILUX GmbH - Hafenstraße 3, 77694 Kehl - Deutschland

Non-contractual photos and colors - Indicative fitting - Fitting may vary depending on support selected

Print pattern MUNA



MUNA Lierre 124



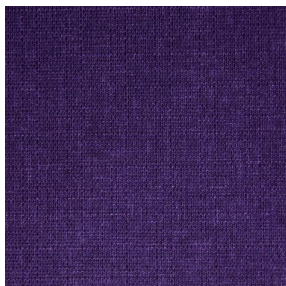
MUNA Indigo 144



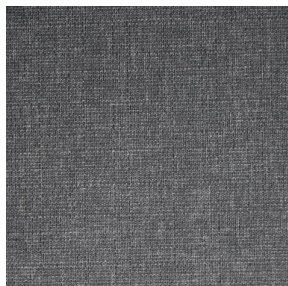
MUNA Sienne 29



MUNA Rouge 21



MUNA Violine 105



MUNA Titanium 98



MUNA Acier 18

drapilux
by Sotexpro

DRAPILUX GmbH - Hafenstraße 3, 77694 Kehl - Deutschland

Non-contractual photos and colors - Indicative fitting - Fitting may vary depending on support selected