



TAO BPI 00
Printing support



SAPHIR Violine 105
Print pattern



Printing support **TAO BPI 00** Print pattern **SAPHIR Violine 105**

Unclassified velvet print support with acrylic coating

Applications Roman blinds - Panel curtains - Curtains

Composition 100% ungraded polyester

Weight 465 g/m²

Width 132 cm

Fabric direction Standard Direction

Fitting ↔ 0,0 cm ↓ 0,0 cm

Maintenance advice     

Label

Minimum order 25 linear(s) meter(s)



Visual not taking into account the printing medium, the final rendering may vary according to the chosen medium.

Technical characteristics

Resilience

Lightfastness (units Class/8)

5

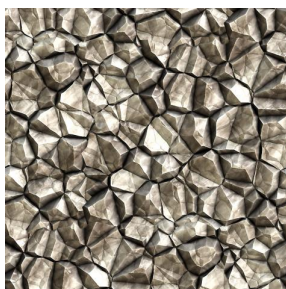
Pilling

5

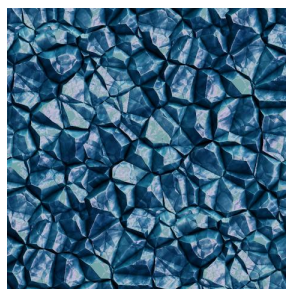
Martindale (Cycles)

60000

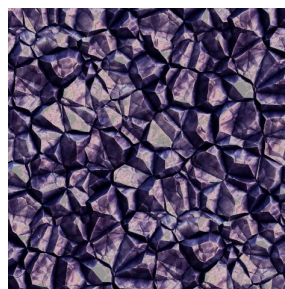
Print pattern SAPHIR



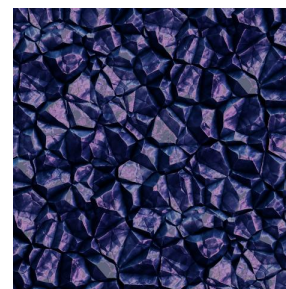
SAPHIR Naturel 26



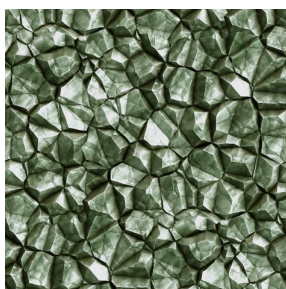
SAPHIR Gentiane 16



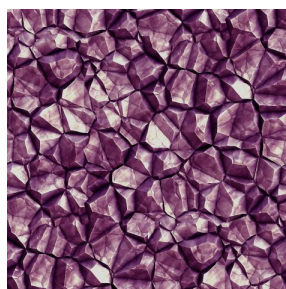
SAPHIR Aubergine 27



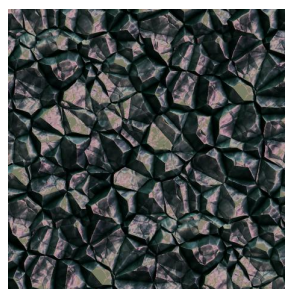
SAPHIR Opéra 104



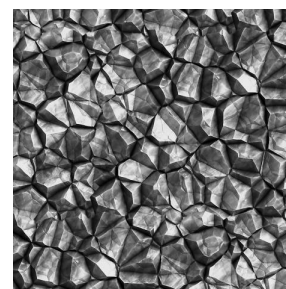
SAPHIR Absinthe 132



SAPHIR Hortensia 134



SAPHIR Reflet 140



SAPHIR Acier 18

drapilux
By Sotexpro

DRAPILUX GmbH - Hafenstraße 3, 77694 Kehl - Deutschland

Non-contractual photos and colors - Indicative fitting - Fitting may vary depending on support selected