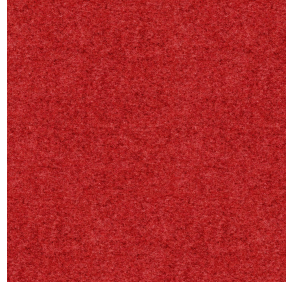




TAO BPI 00  
Printing support



ELAINA Rouge 21  
Print pattern



## Printing support **TAO BPI 00** Print pattern **ELAINA Rouge 21**

Unclassified velvet print support with acrylic coating

**Applications** Roman blinds - Panel curtains - Curtains

**Composition** 100% ungraded polyester

**Weight** 465 g/m<sup>2</sup>

**Width** 132 cm

**Fabric direction** Standard Direction

**Fitting** ↔ 0,0 cm ↓ 0,0 cm

**Maintenance advice**     

**Label**

**Minimum order** 25 linear(s) meter(s)



Visual not taking into account the printing medium, the final rendering may vary according to the chosen medium.

## Technical characteristics

Resilience

Lightfastness (units Class/8)

5

Pilling

5

Martindale (Cycles)

60000

# Print pattern ELAINA



ELAINA Gris 91



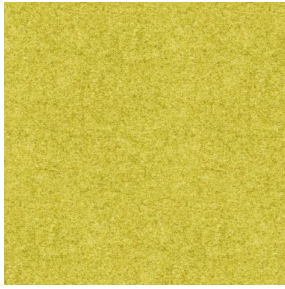
ELAINA Violine 105



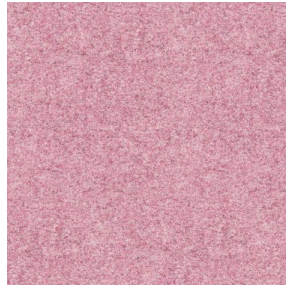
ELAINA Ocre 03



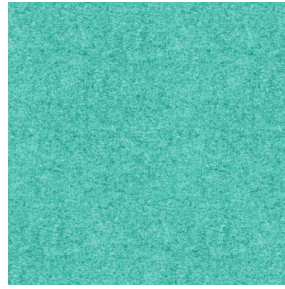
ELAINA Lin 11



ELAINA Bergamote 121



ELAINA Rose 129



ELAINA Pacifique 54



ELAINA Beige 63



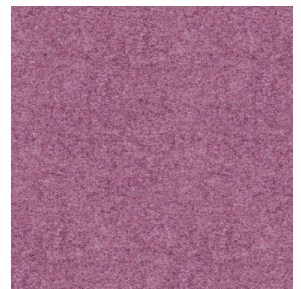
ELAINA Céladon 135



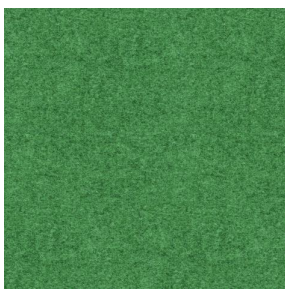
ELAINA Saphir 106



ELAINA Anis 62



ELAINA Hortensia 134



ELAINA Prairie 125



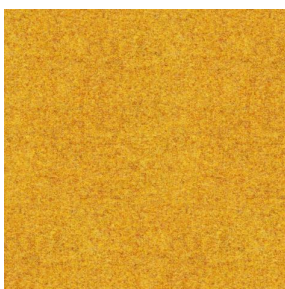
ELAINA Graphite 77



ELAINA Lierre 124



ELAINA Naturel 26



ELAINA Genêt 06



ELAINA Ivoire 115



ELAINA Gentiane 16



ELAINA Navy 120

**drapilux**  
By Sotexpro

DRAPILUX GmbH - Hofenstraße 3, 77694 Kehl - Deutschland

Non-contractual photos and colors - Indicative fitting - Fitting may vary depending on support selected

## Print pattern ELAINA



ELAINA Chamois 111



ELAINA Turquoise 53



ELAINA Anthracite 38



ELAINA Fiesta 131