



TAO BPI 00
Printing support



SALIN Anis 62
Print pattern



Printing support **TAO BPI 00** Print pattern **SALIN Anis 62**

Unclassified velvet print support with acrylic coating

Applications Curtains - Roman blinds - Panel curtains

Composition 100% ungraded polyester

Weight 465 g/m²

Width 132 cm

Fabric direction Standard Direction

Fitting ↔ 0,0 cm ↓ 0,0 cm

Maintenance advice     

Label

Minimum order 25 linear(s) meter(s)



Visual not taking into account the printing medium, the final rendering may vary according to the chosen medium.

Technical characteristics

Resilience

Lightfastness (units Class/8)

5

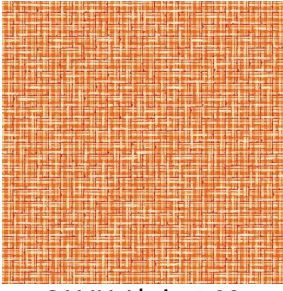
Pilling

5

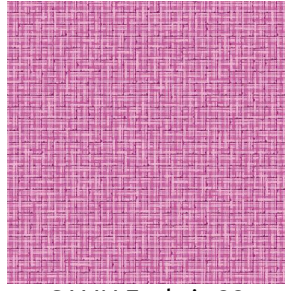
Martindale (Cycles)

60000

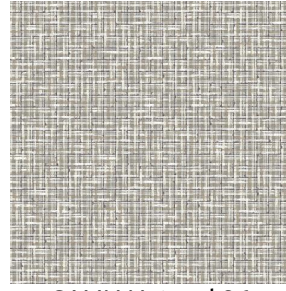
Print pattern SALIN



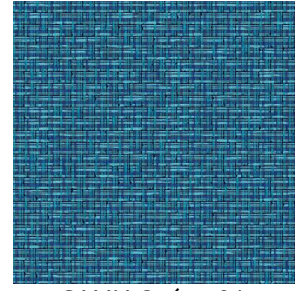
SALIN Abricot 08



SALIN Fuchsia 33



SALIN Naturel 26



SALIN Océan 91



SALIN Orange 15



SALIN Rouge 21



SALIN Turquoise 53



SALIN Vert 24