



SOLLY BPI 00
Printing support



YENDI Terre 107
Print pattern



Printing support **SOLLY BPI 00** Print pattern **YENDI Terre 107**

Textured Printing base fabric. the linen look weft creates a light irregular texture which allows it to be easily printed by transfer sublimation.

Technical properties



Flame retardant

Applications Roman blinds - Panel curtains - Curtains

Composition 50% polyester FR recyclé/50% polyester FR

Weight 240 g/m²

Width 280 cm

Fabric direction Room High Direction

Fitting ↔ 24.0 cm ↓ 20.0 cm

Maintenance advice     

Label France Terre Textile / OEKO-TEX STANDARD 100 Recyclé

Minimum order 25 linear(s) meter(s)



Visual not taking into account the printing medium, the final rendering may vary according to the chosen medium.

Technical characteristics

Flame retardant

M1 / B1 / UNI 8456 / 9174 Classe Uno

Resilience

| | |
|-------------------------------|--------------|
| Lightfastness (units Class/8) | 4 |
| Pilling | 3 |
| Dimensional Stability (%) | |
| Warp | -3 |
| Weft | -1 |
| Martindale (Cycles) | 25000 |
| Breaking Elongation | |
| Warp | 36 |
| Weft | 36 |
| Breaking load (daN) | |
| Warp | 170 |
| Weft | 60 |

Print pattern YENDI



YENDI Anis 62



YENDI Lagon 110



YENDI Lilas 19



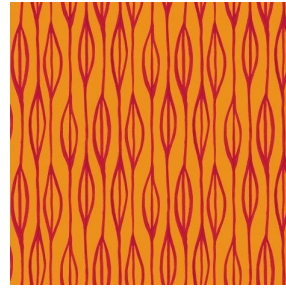
YENDI Opéra 104



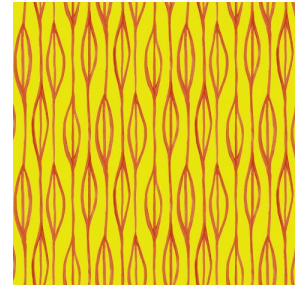
YENDI Pacifique 54



YENDI Sapin 126



YENDI Sanguine 05



YENDI Soleil 127

drapilux
By Sotexpro

DRAPILUX GmbH - Hafenstraße 3, 77694 Kehl - Deutschland

Non-contractual photos and colors - Indicative fitting - Fitting may vary depending on support selected