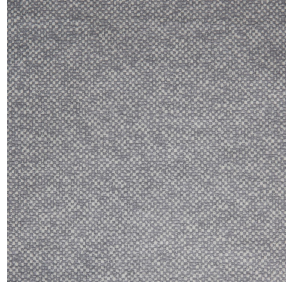




SOLLY BPI 00
Printing support



ANATOLE lin 11
Print pattern



Printing support **SOLLY BPI 00** Print pattern **ANATOLE lin 11**

Textured Printing base fabric. the linen look weft creates a light irregular texture which allows it to be easily printed by transfer sublimation.

Technical properties



Flame retardant

Applications Roman blinds - Panel curtains - Curtains


Composition 50% polyester FR recyclé/50% polyester FR

Weight 240 g/m²

Width 280 cm

Fabric direction Room High Direction

Fitting ↔ cm ↓ cm

Maintenance advice     

Label France Terre Textile / OEKO-TEX STANDARD 100 Recyclé

Minimum order 25 linear(s) meter(s)



Visual not taking into account the printing medium, the final rendering may vary according to the chosen medium.

Technical characteristics

Flame retardant

M1 / B1 / UNI 8456 / 9174 Classe Uno

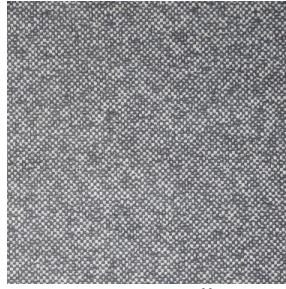
Resilience

| | |
|-------------------------------|--------------|
| Lightfastness (units Class/8) | 4 |
| Pilling | 3 |
| Dimensional Stability (%) | |
| Warp | -3 |
| Weft | -1 |
| Martindale (Cycles) | 25000 |
| Breaking Elongation | |
| Warp | 36 |
| Weft | 36 |
| Breaking load (daN) | |
| Warp | 170 |
| Weft | 60 |

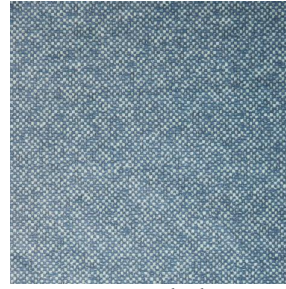
Print pattern ANATOLE



ANATOLE Naturel 26



ANATOLE Ficelle 09



ANATOLE Celadon 135



ANATOLE Océan 91



ANATOLE Titanium 98



ANATOLE Cactus 36



ANATOLE mousse 92



ANATOLE Or 94



ANATOLE Chaudron
118



ANATOLE Amarante
108



ANATOLE Taupe 95