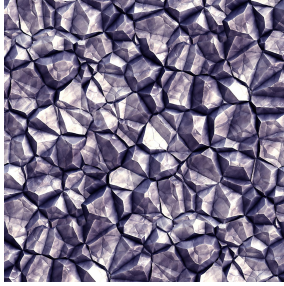




**SOLLY BPI 00**  
Printing support



**SAPHIR Violine 105**  
Print pattern

# Printing support **SOLLY BPI 00** Print pattern **SAPHIR Violine 105**

Textured Printing base fabric. the linen look weft creates a light irregular texture which allows it to be easily printed by transfer sublimation.

## Technical properties



Flame retardant

**Applications** Roman blinds - Panel curtains - Curtains

**Composition** 50% polyester FR recyclé/50% polyester FR

**Weight** 240 g/m<sup>2</sup>

**Width** 280 cm

**Fabric direction** Room High Direction

**Fitting** ↔ 0.0 cm ↓ 0.0 cm

**Maintenance advice**

**Label** France Terre Textile / OEKO-TEX STANDARD 100 Recyclé

**Minimum order** 25 linear(s) meter(s)



Visual not taking into account the printing medium, the final rendering may vary according to the chosen medium.

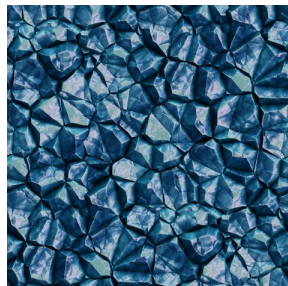
## Technical characteristics

Flame retardant	M1 / B1 / UNI 8456 / 9174 Classe Uno	
Resilience	Lightfastness (units Class/8)	4
	Pilling	3
	Dimentional Stability (%)	
	Warp	-3
	Weft	-1
	Martindale (Cycles)	25000
	Breaking Elongation	
	Warp	36
	Weft	36
	Breaking load (daN)	
	Warp	170
	Weft	60

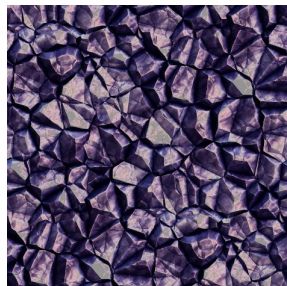
## Print pattern SAPHIR



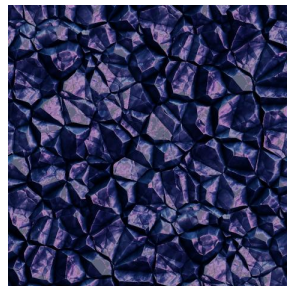
SAPHIR Naturel 26



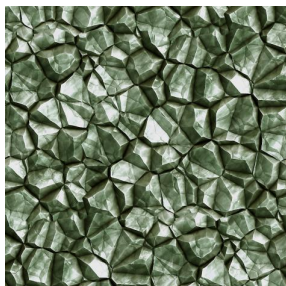
SAPHIR Gentiane 16



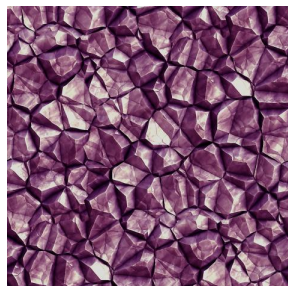
SAPHIR Aubergine 27



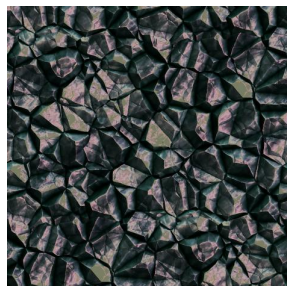
SAPHIR Opéra 104



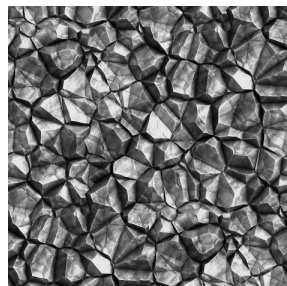
SAPHIR Absinthe 132



SAPHIR Hortensia 134



SAPHIR Reflet 140



SAPHIR Acier 18

**drapilux**  
By Sotexpro

DRAPILUX GmbH - Hafenstraße 3, 77694 Kehl - Deutschland

Non-contractual photos and colors - Indicative fitting - Fitting may vary depending on support selected