



SOLLY BPI 00
Printing support



CHARLOTTE Terre 107
Print pattern



Printing support **SOLLY BPI 00** Print pattern **CHARLOTTE Terre 107**

Textured Printing base fabric. the linen look weft creates a light irregular texture which allows it to be easily printed by transfer sublimation.

Technical properties



Flame retardant

Applications Roman blinds - Panel curtains - Curtains

Composition 50% polyester FR recyclé/50% polyester FR

Weight 240 g/m²

Width 280 cm

Fabric direction Room High Direction

Fitting ↔ 0.0 cm ↓ 0.0 cm

Maintenance advice     

Label France Terre Textile / OEKO-TEX STANDARD 100 Recyclé

Minimum order 25 linear(s) meter(s)



Visual not taking into account the printing medium, the final rendering may vary according to the chosen medium.

Technical characteristics

Flame retardant

M1 / B1 / UNI 8456 / 9174 Classe Uno

Resilience

Lightfastness (units Class/8)	4
Pilling	3
Dimensional Stability (%)	
Warp	-3
Weft	-1
Martindale (Cycles)	25000
Breaking Elongation	
Warp	36
Weft	36
Breaking load (daN)	
Warp	170
Weft	60

Print pattern CHARLOTTE



CHARLOTTE Absinthe
132



CHARLOTTE Anis 62



CHARLOTTE Beige 63



CHARLOTTE Bouteille
101



CHARLOTTE Brume 47



CHARLOTTE Cerise 66



CHARLOTTE Chamois
111



CHARLOTTE Chataigne
55



CHARLOTTE Chaudron
118



CHARLOTTE Chocolat
70



CHARLOTTE Citrouille
136



CHARLOTTE Cobalt 114



CHARLOTTE Crepuscule
45



CHARLOTTE Cuivre 50



CHARLOTTE Ebene 124



CHARLOTTE Ficelle 09



CHARLOTTE Fiesta 131



CHARLOTTE Grenat 56



CHARLOTTE Gris 97



CHARLOTTE Hortensia
134

drapilux
By Sotexpro

DRAPILUX GmbH - Hofenstraße 3, 77694 Kehl - Deutschland

Non-contractual photos and colors - Indicative fitting - Fitting may vary depending on support selected

Print pattern CHARLOTTE



CHARLOTTE Lagon 110



CHARLOTTE Lilas 19



CHARLOTTE Lin 11



CHARLOTTE Maïs 37



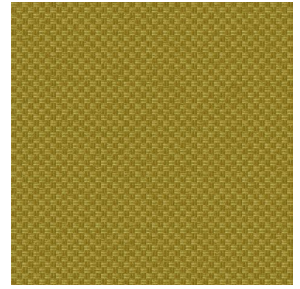
CHARLOTTE Melon 22



CHARLOTTE Menthe
122



CHARLOTTE Mordore
133



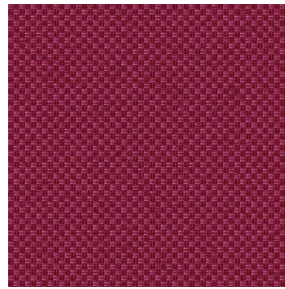
CHARLOTTE Mousse 92



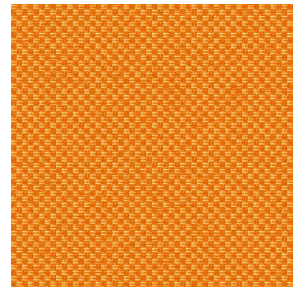
CHARLOTTE Noir 10



CHARLOTTE Océan 91



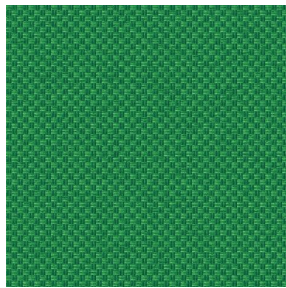
CHARLOTTE Opéra 104



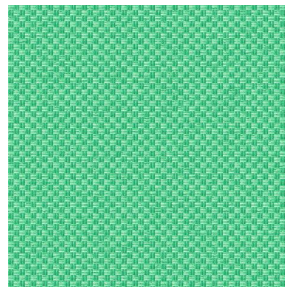
CHARLOTTE Orange 15



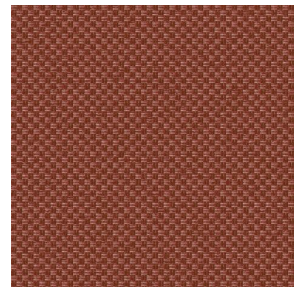
CHARLOTTE Pacifique
54



CHARLOTTE Prairie 125



CHARLOTTE Printemps
130



CHARLOTTE Sienne 29



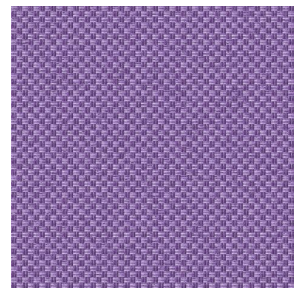
CHARLOTTE Souris 31



CHARLOTTE Tilleul 103



CHARLOTTE Vieux rose
64



CHARLOTTE Violine 105

drapilux
By Sotexpro

DRAPILUX GmbH - Hafenstraße 3, 77694 Kehl - Deutschland

Non-contractual photos and colors - Indicative fitting - Fitting may vary depending on support selected