



SOFTLINE Blanc 01  
Printing support



CHARLOTTE Absinthe 132  
Print pattern



Visual not taking into account the printing medium, the final rendering may vary according to the chosen medium.

## Printing support **SOFTLINE Blanc 01** Print pattern **CHARLOTTE Absinthe 132**

Light and soft canvas with peach skin touch, ideal for slightly filtering light into a room. The Softline can also be used as a lining to provide an extra finishing to your double-lined curtains.

### Technical properties



Flame retardant



Thermal

**Applications** Roman blinds - Panel curtains - Lining - Curtains

**Composition** 100% FR polyester

**Weight** 80 g/m<sup>2</sup>

**Width** 300 cm

**Fabric direction** Room high or standard direction

**Fitting** ↔ 0,0 cm ↓ 0,0 cm

**Maintenance advice**

**Label**

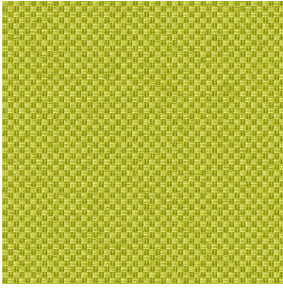
**Minimum order** 25 linear(s) metter(s)

## Technical characteristics

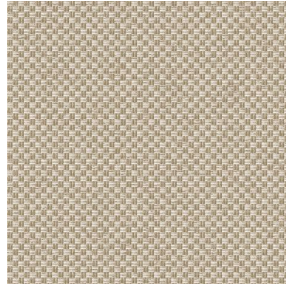
|                 |                               |                 |
|-----------------|-------------------------------|-----------------|
| Flame retardant | M1 / B1 / IMO PASS            |                 |
| Optical index   | Light reflexion :             | 63 %            |
|                 | Light absorption :            | 5 %             |
|                 | Light transmission :          | 32 %            |
| Thermal index   | Solar reflexion :             | 63 %            |
|                 | Solar absorption :            | 5 %             |
|                 | Solar transmission :          | 32 %            |
|                 | UV transmission :             | 25 %            |
|                 | Gtot :                        | Gt 37 % Fc 62 % |
| Resilience      | Lightfastness (units Class/8) | 6               |
|                 | Dimensional Stability (%)     |                 |
|                 | Warp                          | -0.5            |
|                 | Weft                          | -0.5            |
|                 | Breaking Elongation           |                 |
|                 | Warp                          | 25              |
|                 | Weft                          | 10              |
|                 | Breaking load (daN)           |                 |
| Warp            | 45                            |                 |
| Weft            | 23                            |                 |



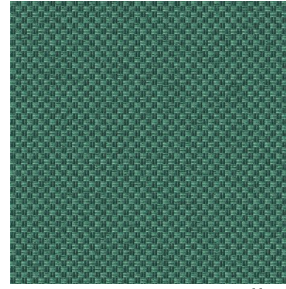
# Print pattern CHARLOTTE



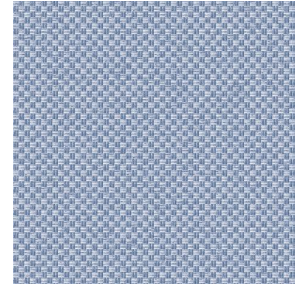
CHARLOTTE Anis 62



CHARLOTTE Beige 63



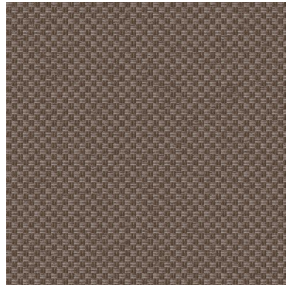
CHARLOTTE Bouteille  
101



CHARLOTTE Brume 47



CHARLOTTE Cerise 66



CHARLOTTE Chamois  
111



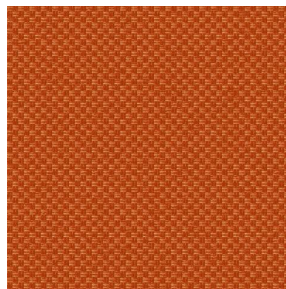
CHARLOTTE Chataigne  
55



CHARLOTTE Chaudron  
118



CHARLOTTE Chocolat  
70



CHARLOTTE Citrouille  
136



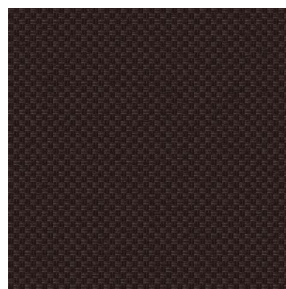
CHARLOTTE Cobalt 114



CHARLOTTE Crepuscule  
45



CHARLOTTE Cuivre 50



CHARLOTTE Ebene 124



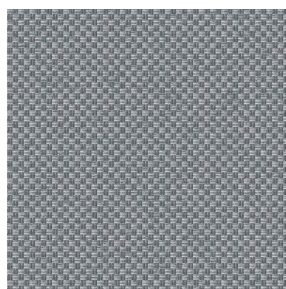
CHARLOTTE Ficelle 09



CHARLOTTE Fiesta 131



CHARLOTTE Grenat 56



CHARLOTTE Gris 97



CHARLOTTE Hortensia  
134



CHARLOTTE Lagon 110

**drapilux**  
By Sotexpro

DRAPILUX GmbH - Hofenstraße 3, 77694 Kehl - Deutschland

Non-contractual photos and colors - Indicative fitting - Fitting may vary depending on support selected



# Print pattern CHARLOTTE



CHARLOTTE Lilas 19



CHARLOTTE Lin 11



CHARLOTTE Mais 37



CHARLOTTE Melon 22



CHARLOTTE Menthe  
122



CHARLOTTE Mordore  
133



CHARLOTTE Mousse 92



CHARLOTTE Noir 10



CHARLOTTE Océan 91



CHARLOTTE Opéra 104



CHARLOTTE Orange 15



CHARLOTTE Pacifique  
54



CHARLOTTE Prairie 125



CHARLOTTE Printemps  
130



CHARLOTTE Sienne 29



CHARLOTTE Souris 31



CHARLOTTE Terre 107



CHARLOTTE Tilleul 103



CHARLOTTE Vieux rose  
64



CHARLOTTE Violine 105

**drapilux**  
By Sotexpro

DRAPILUX GmbH - Hafenstraße 3, 77694 Kehl - Deutschland

Non-contractual photos and colors - Indicative fitting - Fitting may vary depending on support selected