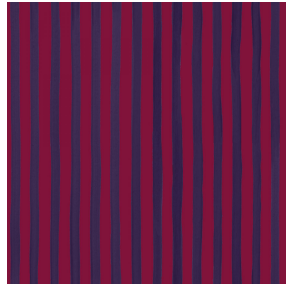




SOFTLINE Blanc 01
Printing support



SONG Opéra 104
Print pattern



Printing support **SOFTLINE Blanc 01** Print pattern **SONG Opéra 104**

Light and soft canvas with peach skin touch, ideal for slightly filtering light into a room. The Softline can also be used as a lining to provide an extra finishing to your double-lined curtains.

Technical properties



Flame retardant



Thermal

Applications Roman blinds - Panel curtains - Lining - Curtains

Composition 100% FR polyester

Weight 80 g/m²

Width 300 cm

Fabric direction Room high or standard direction

Fitting ↔ 35.0 cm ↓ 35.0 cm

Maintenance advice      

Label

Minimum order 25 linear(s) meter(s)

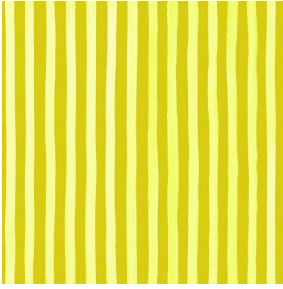


Visual not taking into account the printing medium, the final rendering may vary according to the chosen medium.

Technical characteristics

Flame retardant	M1 / B1 / IMO PASS
Optical index	Light reflexion : 63 %
	Light absorption : 5 %
	Light transmission : 32 %
Thermal index	Solar reflexion : 63 %
	Solar absorption : 5 %
	Solar transmission : 32 %
	UV transmission : 25 %
	Gtot : Gt 37 % Fc 62 %
Resilience	Lightfastness (units Class/8) 6
	Dimensional Stability (%)
	Warp -0.5
	Weft -0.5
	Breaking Elongation
	Warp 25
	Weft 10
	Breaking load (daN)
Warp 45	
Weft 23	

Print pattern SONG



SONG Agrume 69



SONG Framboise 81



SONG Lierre 124



SONG Menthe 122



SONG Naturel 26



SONG Navy 120



SONG Océan 91



SONG Orage 123



SONG Orange 15



SONG Prairie 125



SONG Prune 84



SONG Sanguine 05



SONG Soleil 127



SONG Titanium 98



SONG Violine 105



SONG Jade 116



SONG Sapin 126



SONG Tilleul 103



SONG maïs 37

drapilux
By Sotexpro

DRAPILUX GmbH - Hafenstraße 3, 77694 Kehl - Deutschland

Non-contractual photos and colors - Indicative fitting - Fitting may vary depending on support selected