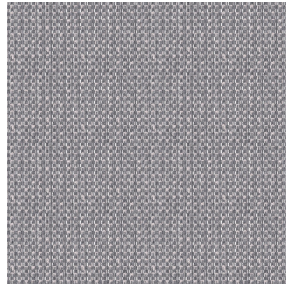




SOFTLINE Blanc 01
Printing support



RIVE Gris 97
Print pattern



Printing support **SOFTLINE Blanc 01** Print pattern **RIVE Gris 97**

Light and soft canvas with peach skin touch, ideal for slightly filtering light into a room. The Softline can also be used as a lining to provide an extra finishing to your double-lined curtains.

Technical properties



Flame retardant



Thermal

Applications Roman blinds - Panel curtains - Lining - Curtains

Composition 100% FR polyester

Weight 80 g/m²

Width 300 cm

Fabric direction Room high or standard direction

Fitting ↔ cm ↓ cm

Maintenance advice

Label

Minimum order 25 linear(s) meter(s)



Visual not taking into account the printing medium, the final rendering may vary according to the chosen medium.

Technical characteristics

| | | |
|-----------------|-------------------------------|-----------------|
| Flame retardant | M1 / B1 / IMO PASS | |
| Optical index | Light reflexion : | 63 % |
| | Light absorption : | 5 % |
| | Light transmission : | 32 % |
| Thermal index | Solar reflexion : | 63 % |
| | Solar absorption : | 5 % |
| | Solar transmission : | 32 % |
| | UV transmission : | 25 % |
| | Gtot : | Gt 37 % Fc 62 % |
| Resilience | Lightfastness (units Class/8) | 6 |
| | Dimensional Stability (%) | |
| | Warp | -0.5 |
| | Weft | -0.5 |
| | Breaking Elongation | |
| | Warp | 25 |
| | Weft | 10 |
| | Breaking load (daN) | |
| Warp | 45 | |
| Weft | 23 | |

Print pattern RIVE



RIVE Fuchsia 33



RIVE Bleu 41



RIVE Jaune 46



RIVE Océan 91



RIVE Turquoise 53



RIVE Sable 67



RIVE Taupe 95