



SOFTLINE Blanc 01
Printing support



RIVE Océan 91
Print pattern



Printing support **SOFTLINE Blanc 01** Print pattern **RIVE Océan 91**

Light and soft canvas with peach skin touch, ideal for slightly filtering light into a room. The Softline can also be used as a lining to provide an extra finishing to your double-lined curtains.

Technical properties



Flame retardant



Thermal

Applications Roman blinds - Panel curtains - Lining - Curtains


Composition 100% FR polyester

Weight 80 g/m²

Width 300 cm

Fabric direction Room high or standard direction

Fitting ↔ 0.0 cm ↓ 0.0 cm

Maintenance advice      

Label

Minimum order 25 linear(s) meter(s)



Visual not taking into account the printing medium, the final rendering may vary according to the chosen medium.

Technical characteristics

| | | | |
|-----------------|-------------------------------|-----------------|------|
| Flame retardant | M1 / B1 / IMO PASS | | |
| Optical index | Light reflexion : | 63 % | |
| | Light absorption : | 5 % | |
| | Light transmission : | 32 % | |
| Thermal index | Solar reflexion : | 63 % | |
| | Solar absorption : | 5 % | |
| | Solar transmission : | 32 % | |
| | UV transmission : | 25 % | |
| | Gtot : | Gt 37 % Fc 62 % | |
| Resilience | Lightfastness (units Class/8) | 6 | |
| | Dimensional Stability (%) | Warp | -0.5 |
| | | Weft | -0.5 |
| | Breaking Elongation | Warp | 25 |
| | | Weft | 10 |
| | Breaking load (daN) | Warp | 45 |
| | | Weft | 23 |

Print pattern RIVE



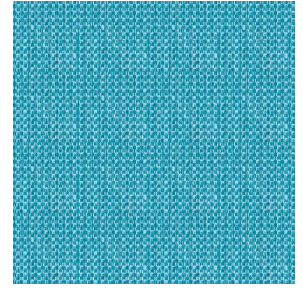
RIVE Fuchsia 33



RIVE Bleu 41



RIVE Jaune 46



RIVE Turquoise 53



RIVE Sable 67



RIVE Taupe 95



RIVE Gris 97

drapilux
By Sotexpro

DRAPILUX GmbH - Hafenstraße 3, 77694 Kehl - Deutschland

Non-contractual photos and colors - Indicative fitting - Fitting may vary depending on support selected