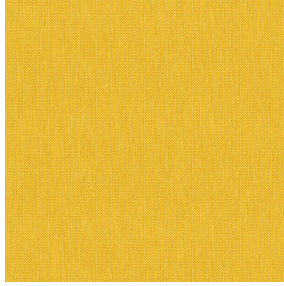




**SOFTLINE Blanc 01**  
Printing support



**RIVE Jaune 46**  
Print pattern



## Printing support **SOFTLINE Blanc 01** Print pattern **RIVE Jaune 46**

Light and soft canvas with peach skin touch, ideal for slightly filtering light into a room. The Softline can also be used as a lining to provide an extra finishing to your double-lined curtains.

### Technical properties



Flame retardant



Thermal

**Applications** Roman blinds - Panel curtains - Lining - Curtains

**Composition** 100% FR polyester

**Weight** 80 g/m<sup>2</sup>

**Width** 300 cm

**Fabric direction** Room high or standard direction

**Fitting** ↔ 0.0 cm ↓ 0.0 cm

**Maintenance advice**

**Label**

**Minimum order** 25 linear(s) meter(s)

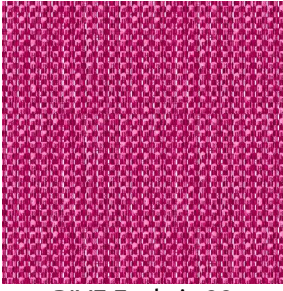


Visual not taking into account the printing medium, the final rendering may vary according to the chosen medium.

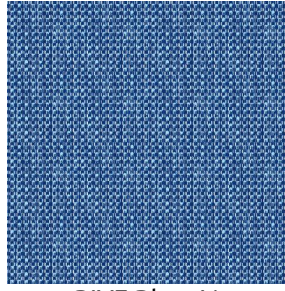
## Technical characteristics

Flame retardant	M1 / B1 / IMO PASS
Optical index	Light reflexion : <b>63 %</b>
	Light absorption : <b>5 %</b>
	Light transmission : <b>32 %</b>
Thermal index	Solar reflexion : <b>63 %</b>
	Solar absorption : <b>5 %</b>
	Solar transmission : <b>32 %</b>
	UV transmission : <b>25 %</b>
	Gtot : <b>Gt 37 % Fc 62 %</b>
Resilience	Lightfastness (units Class/8) <b>6</b>
	Dimensional Stability (%)
	Warp <b>-0.5</b>
	Weft <b>-0.5</b>
	Breaking Elongation
	Warp <b>25</b>
	Weft <b>10</b>
	Breaking load (daN)
Warp <b>45</b>	
Weft <b>23</b>	

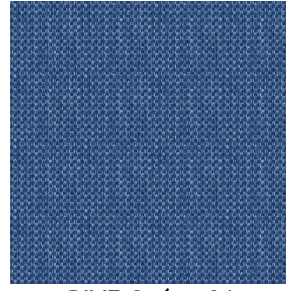
## Print pattern RIVE



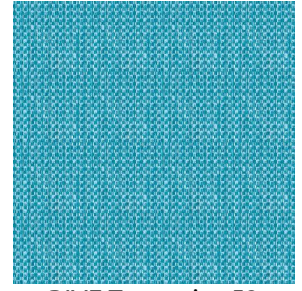
RIVE Fuchsia 33



RIVE Bleu 41



RIVE Océan 91



RIVE Turquoise 53



RIVE Sable 67



RIVE Taupe 95



RIVE Gris 97

**drapilux**  
By Sotexpro

DRAPILUX GmbH - Hafenstraße 3, 77694 Kehl - Deutschland

Non-contractual photos and colors - Indicative fitting - Fitting may vary depending on support selected