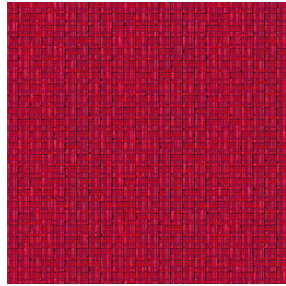




SOFTLINE Blanc 01
Printing support



SALIN Rouge 21
Print pattern



Printing support **SOFTLINE Blanc 01** Print pattern **SALIN Rouge 21**

Light and soft canvas with peach skin touch, ideal for slightly filtering light into a room. The Softline can also be used as a lining to provide an extra finishing to your double-lined curtains.

Technical properties



Flame retardant



Thermal

Applications Roman blinds - Panel curtains - Lining - Curtains

Composition 100% FR polyester

Weight 80 g/m²

Width 300 cm

Fabric direction Room high or standard direction

Fitting ↔ 0.0 cm ↓ 0.0 cm

Maintenance advice     

Label

Minimum order 25 linear(s) meter(s)



Visual not taking into account the printing medium, the final rendering may vary according to the chosen medium.

Technical characteristics

Flame retardant

M1 / B1 / IMO PASS

Optical index

Light reflexion : 63 %

Light absorption : 5 %

Light transmission : 32 %

Thermal index

Solar reflexion : 63 %

Solar absorption : 5 %

Solar transmission : 32 %

UV transmission : 25 %

Gtot : Gt 37 % Fc 62 %

Resilience

Lightfastness (units Class/8) 6

Dimensional Stability (%)

Warp -0.5

Weft -0.5

Breaking Elongation

Warp 25

Weft 10

Breaking load (daN)

Warp 45

Weft 23

Print pattern SALIN



SALIN Abricot 08



SALIN Anis 62



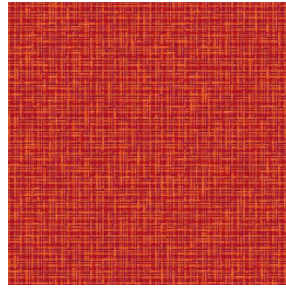
SALIN Fuchsia 33



SALIN Naturel 26



SALIN Océan 91



SALIN Orange 15



SALIN Turquoise 53



SALIN Vert 24