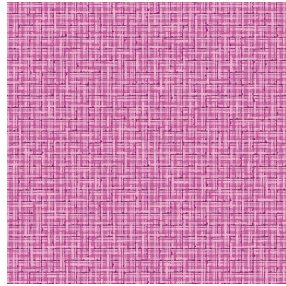




**SOFTLINE Blanc 01**  
Printing support



**SALIN Fuchsia 33**  
Print pattern



## Printing support **SOFTLINE Blanc 01** Print pattern **SALIN Fuchsia 33**

Light and soft canvas with peach skin touch, ideal for slightly filtering light into a room. The Softline can also be used as a lining to provide an extra finishing to your double-lined curtains.

### Technical properties



Flame retardant



Thermal

**Applications** Roman blinds - Panel curtains - Lining - Curtains

**Composition** 100% FR polyester

**Weight** 80 g/m<sup>2</sup>

**Width** 300 cm

**Fabric direction** Room high or standard direction

**Fitting** ↔ 0.0 cm ↓ 0.0 cm

**Maintenance advice**     

**Label**

**Minimum order** 25 linear(s) meter(s)



Visual not taking into account the printing medium, the final rendering may vary according to the chosen medium.

## Technical characteristics

Flame retardant

M1 / B1 / IMO PASS

Optical index

Light reflexion : **63 %**

Light absorption : **5 %**

Light transmission : **32 %**

Thermal index

Solar reflexion : **63 %**

Solar absorption : **5 %**

Solar transmission : **32 %**

UV transmission : **25 %**

Gtot : **Gt 37 % Fc 62 %**

Resilience

Lightfastness (units Class/8) **6**

Dimensional Stability (%)

Warp **-0.5**

Weft **-0.5**

Breaking Elongation

Warp **25**

Weft **10**

Breaking load (daN)

Warp **45**

Weft **23**

# Print pattern SALIN



SALIN Abricot 08



SALIN Anis 62



SALIN Naturel 26



SALIN Océan 91



SALIN Orange 15



SALIN Rouge 21



SALIN Turquoise 53



SALIN Vert 24