

SKAILO Blanc 01
Printing support



FLAKE Chataigne 55
Print pattern



Printing support **SKAILO Blanc 01** Print pattern **FLAKE Chataigne 55**

Our SKAILO quality is an artificial leather developed to be a print support. Its leather look is finely textured, its polyester/cotton textile base gives it flexibility. This reference is ideal for making headboards, seats and poufs thanks to its flexibility and good performance in terms of abrasion resistance. The SKAILO is customizable thanks to our new direct printing technology, dedicated to the treatment of this type of support, this technique guarantees an optimal definition of the patterns and the colors.

Applications Valences - Headboard



Composition poly-coton enduction polyuréthane

Weight 435 g/m²

Width 138 cm

Fabric direction Room high or standard direction

Fitting → 20.0 cm ↓ 15.0 cm

Maintenance advice      

Label

Minimum order 35 linear(s) mètre(s)



Visual not taking into account the printing medium, the final rendering may vary according to the chosen medium.

Technical characteristics

Resilience

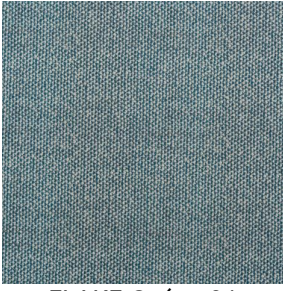
Lightfastness (units Class/8)

6

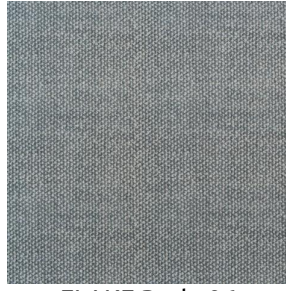
Martindale (Cycles)

50000

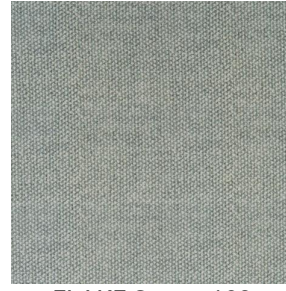
Print pattern FLAKE



FLAKE Océan 91



FLAKE Perle 96



FLAKE Saugé 182

drapilux
By Sotexpro

DRAPILUX GmbH - Hafenstraße 3, 77694 Kehl - Deutschland

Non-contractual photos and colors - Indicative fitting - Fitting may vary depending on support selected