



SKAILO Blanc 01
Printing support



RAPHIA Osier 171
Print pattern



Printing support **SKAILO Blanc 01** Print pattern **RAPHIA Osier 171**

Our SKAILO quality is an artificial leather developed to be a print support. Its leather look is finely textured, its polyester/cotton textile base gives it flexibility. This reference is ideal for making headboards, seats and poufs thanks to its flexibility and good performance in terms of abrasion resistance. The SKAILO is customizable thanks to our new direct printing technology, dedicated to the treatment of this type of support, this technique guarantees an optimal definition of the patterns and the colors.

Applications Valences - Headboard



Composition poly-coton enduction polyuréthane

Weight 435 g/m²

Width 138 cm

Fabric direction Room high or standard direction

Fitting ↔ 28.0 cm ↓ 10.0 cm

Maintenance advice     

Label

Minimum order 35 linear(s) meter(s)



Visual not taking into account the printing medium, the final rendering may vary according to the chosen medium.

Technical characteristics

Resilience

Lightfastness (units Class/8)

6

Martindale (Cycles)

50000

Print pattern RAPHIA



RAPHIA Sable 67



RAPHIA Sable 67



RAPHIA Galet 147



RAPHIA Gris 97



RAPHIA Fusain 71



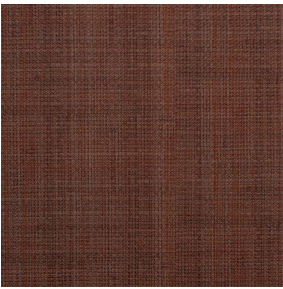
RAPHIA Chamois 111



RAPHIA Kaki 148



RAPHIA Taupe 95



RAPHIA Poterie 167