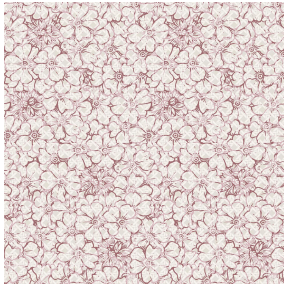


SKAILO Blanc 01
Printing support



6059 Rose 129
Print pattern

Printing support **SKAILO Blanc 01** Print pattern **6059 Rose 129**

Our SKAILO quality is an artificial leather developed to be a print support. Its leather look is finely textured, its polyester/cotton textile base gives it flexibility. This reference is ideal for making headboards, seats and poufs thanks to its flexibility and good performance in terms of abrasion resistance. The SKAILO is customizable thanks to our new direct printing technology, dedicated to the treatment of this type of support, this technique guarantees an optimal definition of the patterns and the colors.

- ApplicationsValences - Headboard
- Compositionpoly-coton enduction polyuréthane
- Weight435 g/m²
- Width138 cm
- Fabric directionRoom high or standard direction
- Fitting↔ 25.0 cm ↓ 25.0 cm
- Maintenance advice🧽 ✂️ 🚫 🚰
- Label
- Minimum order25 linear(s) meter(s)

⚠️
Visual not taking into account the printing medium, the final rendering may vary according to the chosen medium.

Technical characteristics

Resilience	Lightfastness (units Class/8)	6
	Martindale (Cycles)	50000