



SKAILO Blanc 01  
Printing support



SONG Opéra 104  
Print pattern



## Printing support **SKAILO Blanc 01** Print pattern **SONG Opéra 104**

Our SKAILO quality is an artificial leather developed to be a print support. Its leather look is finely textured, its polyester/cotton textile base gives it flexibility. This reference is ideal for making headboards, seats and poufs thanks to its flexibility and good performance in terms of abrasion resistance. The SKAILO is customizable thanks to our new direct printing technology, dedicated to the treatment of this type of support, this technique guarantees an optimal definition of the patterns and the colors.

**Applications** Valences - Headboard

**Composition** poly-coton enduction polyuréthane

**Weight** 435 g/m<sup>2</sup>

**Width** 138 cm

**Fabric direction** Room high or standard direction

**Fitting** ↔ 35.0 cm ↓ 35.0 cm

**Maintenance advice**     

**Label**

**Minimum order** 25 linear(s) meter(s)



Visual not taking into account the printing medium, the final rendering may vary according to the chosen medium.

## Technical characteristics

Resilience

Lightfastness (units Class/8)

6

Martindale (Cycles)

50000

# Print pattern SONG



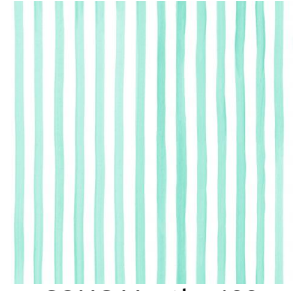
SONG Agrume 69



SONG Framboise 81



SONG Lierre 124



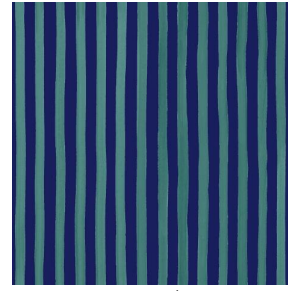
SONG Menthe 122



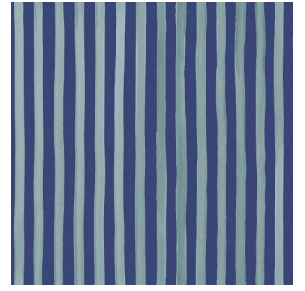
SONG Naturel 26



SONG Navy 120



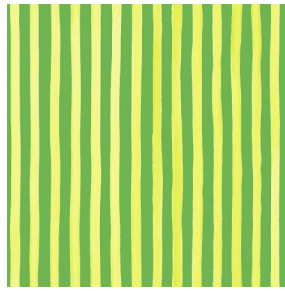
SONG Océan 91



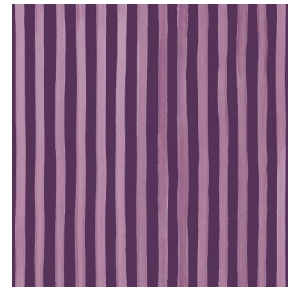
SONG Orage 123



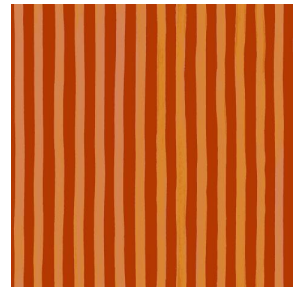
SONG Orange 15



SONG Prairie 125



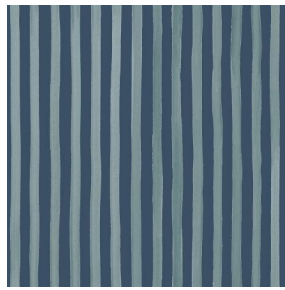
SONG Prune 84



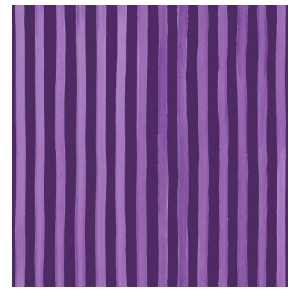
SONG Sanguine 05



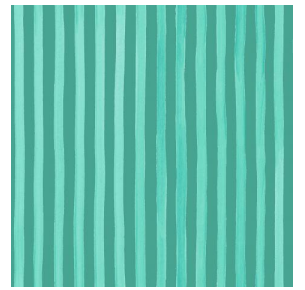
SONG Soleil 127



SONG Titanium 98



SONG Violine 105



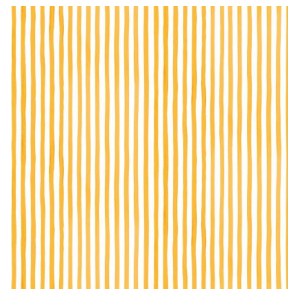
SONG Jade 116



SONG Sapin 126



SONG Tilleul 103



SONG maïs 37

**drapilux**  
By Sotexpro

DRAPILUX GmbH - Hafenstraße 3, 77694 Kehl - Deutschland

Non-contractual photos and colors - Indicative fitting - Fitting may vary depending on support selected