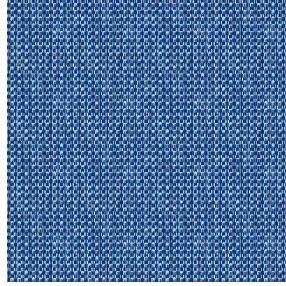




SKAILO Blanc 01
Printing support



RIVE Bleu 41
Print pattern



Visual not taking into account the printing medium, the final rendering may vary according to the chosen medium.

Printing support **SKAILO Blanc 01** Print pattern **RIVE Bleu 41**

Our SKAILO quality is an artificial leather developed to be a print support. Its leather look is finely textured, its polyester/cotton textile base gives it flexibility. This reference is ideal for making headboards, seats and poufs thanks to its flexibility and good performance in terms of abrasion resistance. The SKAILO is customizable thanks to our new direct printing technology, dedicated to the treatment of this type of support, this technique guarantees an optimal definition of the patterns and the colors.

Applications Valences - Headboard


Composition poly-coton enduction polyuréthane

Weight 435 g/m²

Width 138 cm

Fabric direction Room high or standard direction

Fitting ↔ 0.0 cm ↓ 0.0 cm

Maintenance advice     

Label

Minimum order 35 linear(s) meter(s)

Technical characteristics

Resilience

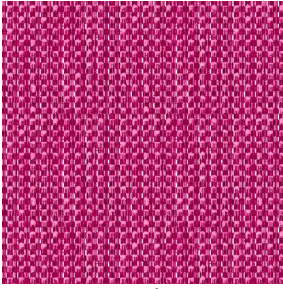
Lightfastness (units Class/8)

6

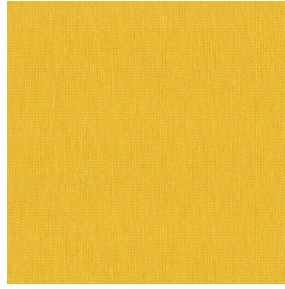
Martindale (Cycles)

50000

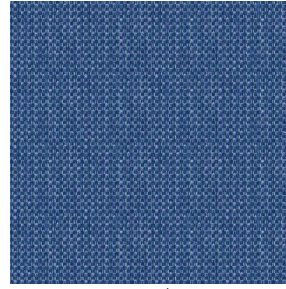
Print pattern RIVE



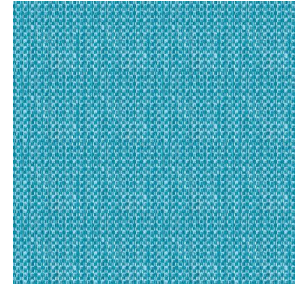
RIVE Fuchsia 33



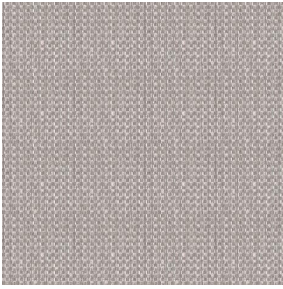
RIVE Jaune 46



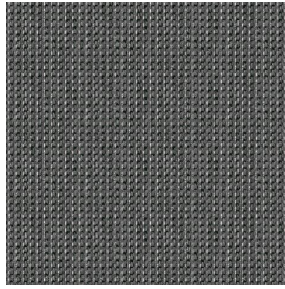
RIVE Océan 91



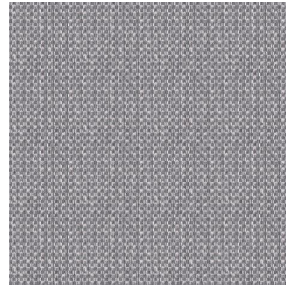
RIVE Turquoise 53



RIVE Sable 67



RIVE Taupe 95



RIVE Gris 97

drapilux
By Sotexpro

DRAPILUX GmbH - Hafenstraße 3, 77694 Kehl - Deutschland

Non-contractual photos and colors - Indicative fitting - Fitting may vary depending on support selected