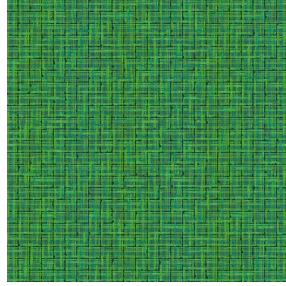




SKAILO Blanc 01
Printing support



SALIN Vert 24
Print pattern



Visual not taking into account the printing medium, the final rendering may vary according to the chosen medium.

Printing support **SKAILO Blanc 01** Print pattern **SALIN Vert 24**

Our SKAILO quality is an artificial leather developed to be a print support. Its leather look is finely textured, its polyester/cotton textile base gives it flexibility. This reference is ideal for making headboards, seats and poufs thanks to its flexibility and good performance in terms of abrasion resistance. The SKAILO is customizable thanks to our new direct printing technology, dedicated to the treatment of this type of support, this technique guarantees an optimal definition of the patterns and the colors.

Applications Valences - Headboard

Composition poly-coton enduction polyuréthane

Weight 435 g/m²

Width 138 cm

Fabric direction Room high or standard direction

Fitting ↔ 0.0 cm ↓ 0.0 cm

Maintenance advice     

Label

Minimum order 35 linear(s) meter(s)

Technical characteristics

Resilience

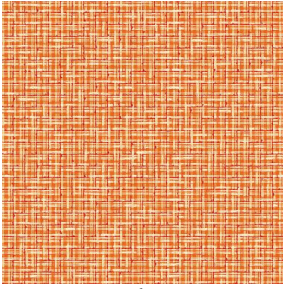
Lightfastness (units Class/8)

6

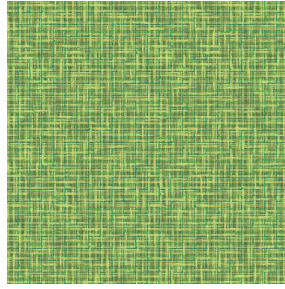
Martindale (Cycles)

50000

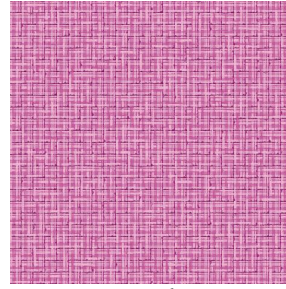
Print pattern SALIN



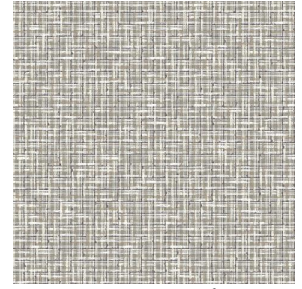
SALIN Abricot 08



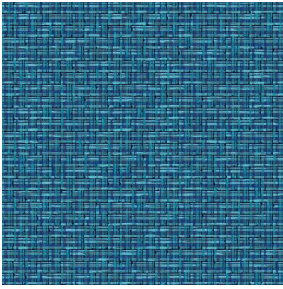
SALIN Anis 62



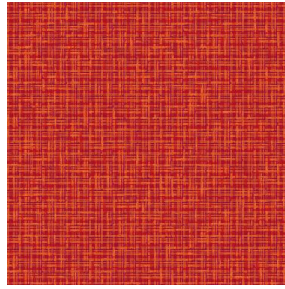
SALIN Fuchsia 33



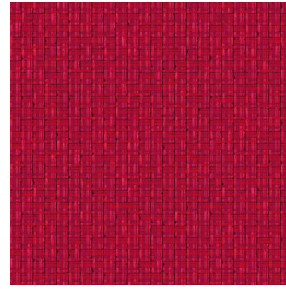
SALIN Naturel 26



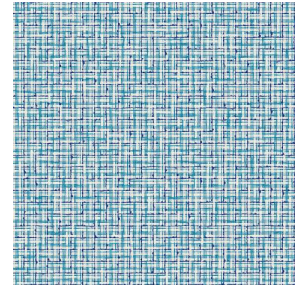
SALIN Océan 91



SALIN Orange 15



SALIN Rouge 21



SALIN Turquoise 53