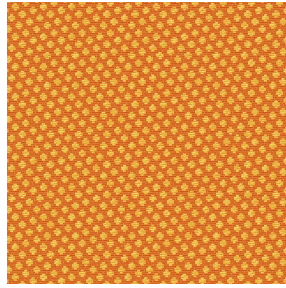


**SIENTO RECYCLE UNI**  
**Naturel 26**  
Printing support



**GONIDIE Brique 42**  
Print pattern



Visual not taking into account the printing medium, the final rendering may vary according to the chosen medium.



## Printing support **SIENTO RECYCLE** **UNI Naturel 26** Print pattern **GONIDIE Brique 42**

Heavy canvas fabric, the Siento recyclé is woven with mixed dyed yarns which gives this textured linen effect. The warp and weft are made with recycled polyester yarns. Usable as a printing support. Please note : the background can modify the coloristic rendering.

### Technical properties



Flame retardant



Thermal



Acoustic



Recycled fabrics

### Applications

Roman blinds - Panel curtains - Bedspreads - Valences - Seating - Bed runners - Curtains - Cushions






**Composition** 80% recycled polyester FR / 20% polyester FR

**Weight** 330 g/m<sup>2</sup>

**Width** 290 cm

**Fabric direction** Room high or standard direction

**Fitting** ↔ 0.0 cm ↑ 0.0 cm

**Maintenance advice**     

**Label** France Terre Textile / OEKO-TEX STANDARD 100 Recyclé

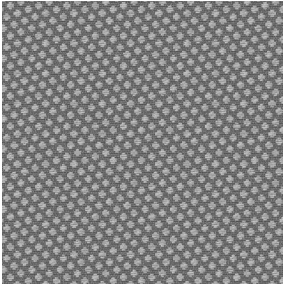
**Minimum order** 25 linear(s) meter(s)

## Technical characteristics

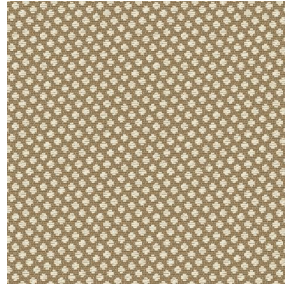
Flame retardant	M1 / B1 / IMO PASS / UNI 8456 / 9174 Classe Uno	
Acoustic	Noise reduction coefficient (NRC) :	<b>0.73</b>
Optical index	Light reflexion :	<b>52 %</b>
	Light absorption :	<b>40 %</b>
	Light transmission :	<b>8 %</b>
Thermal index	Solar reflexion :	<b>61 %</b>
	Solar absorption :	<b>24 %</b>
	Solar transmission :	<b>15 %</b>
	UV transmission :	<b>3 %</b>
	Gtot :	<b>Gt 37 % Fc 63 %</b>
Resilience	Lightfastness (units Class/8)	<b>6</b>
	Pilling	<b>4-5</b>
	Dimentional Stability (%)	
	Warp	<b>-1,5</b>
	Weft	<b>-1,5</b>
	Martindale (Cycles)	<b>90000</b>
	Breaking Elongation	
	Warp	<b>41</b>
	Weft	<b>44</b>
	Breaking load (daN)	
	Warp	<b>180</b>
	Weft	<b>150</b>



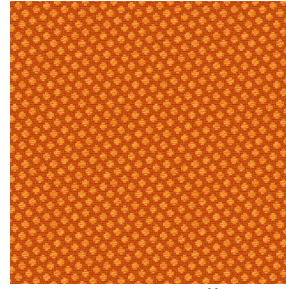
# Print pattern GONIDIE



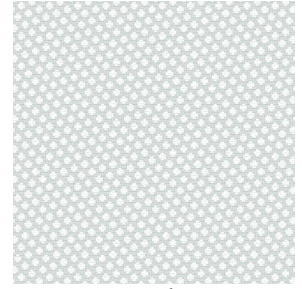
GONIDIE Souris 31



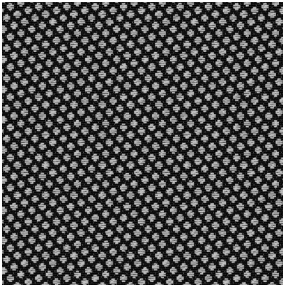
GONIDIE Beige 63



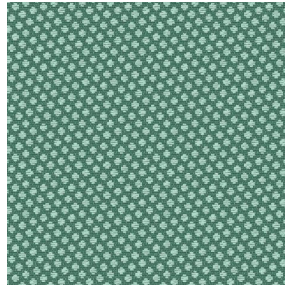
GONIDIE Citrouille 136



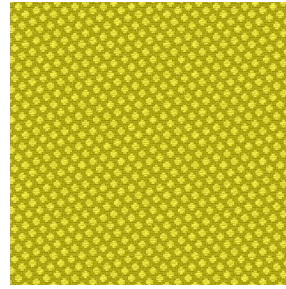
GONIDIE Glacier 43



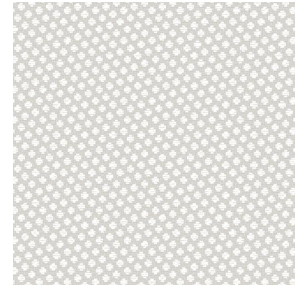
GONIDIE Noir 10



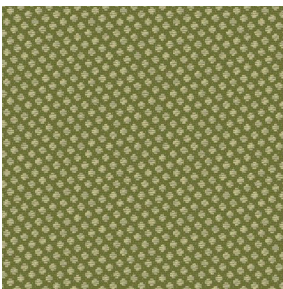
GONIDIE Céladon 135



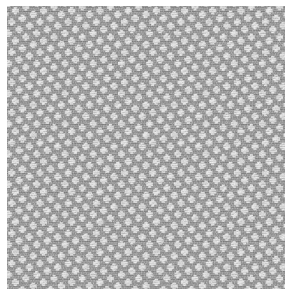
GONIDIE Anis 62



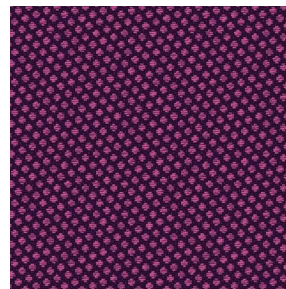
GONIDIE Perle 96



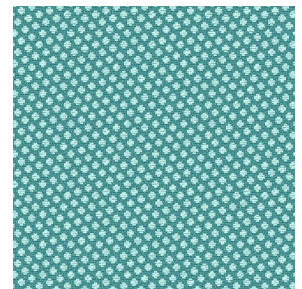
GONIDIE Mousse 92



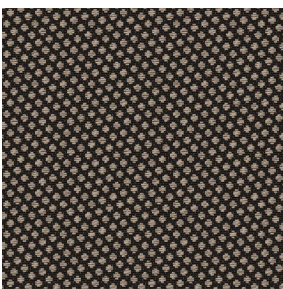
GONIDIE Tourterelle  
138



GONIDIE Opéra 104



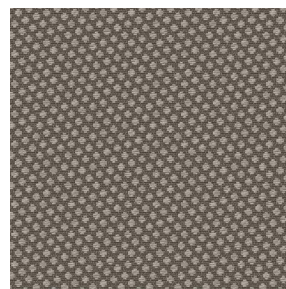
GONIDIE Pacifique 54



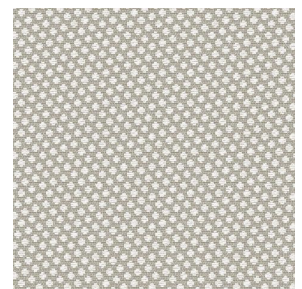
GONIDIE Brun 23



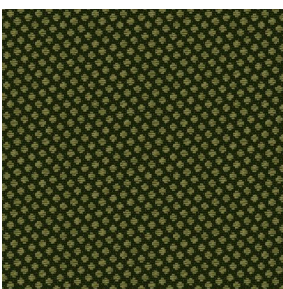
GONIDIE Crème 32



GONIDIE Taupe 95



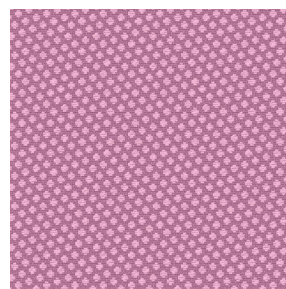
GONIDIE Lin 11



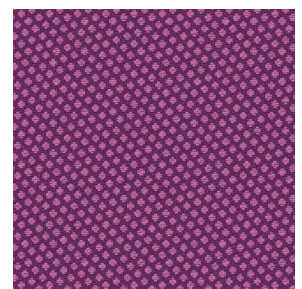
GONIDIE Lierre 124



GONIDIE Bergamote  
121



GONIDIE Hortensia 134



GONIDIE Vieux rose 64

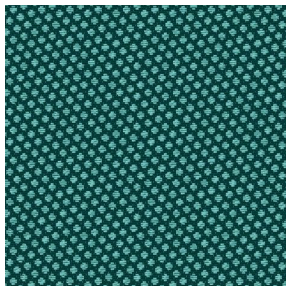
**drapilux**  
By Sotexpro

DRAPILUX GmbH - Hafenstraße 3, 77694 Kehl - Deutschland

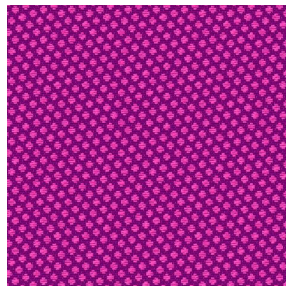
Non-contractual photos and colors - Indicative fitting - Fitting may vary depending on support selected



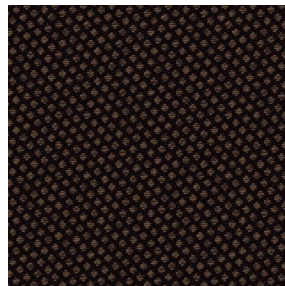
## Print pattern GONIDIE



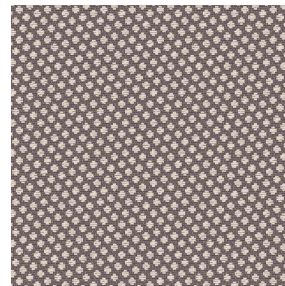
GONIDIE Emeraude 88



GONIDIE Fuchsia 33



GONIDIE Ebene 113



GONIDIE Ficelle 09

**drapilux**  
by Sotexpro

DRAPILUX GmbH - Hafenstraße 3, 77694 Kehl - Deutschland

Non-contractual photos and colors - Indicative fitting - Fitting may vary depending on support selected