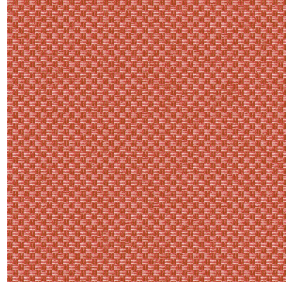


**SIENTO RECYCLE UNI**  
Naturel 26  
Printing support



**CHARLOTTE Melon 22**  
Print pattern



Visual not taking into account the printing medium, the final rendering may vary according to the chosen medium.



## Printing support **SIENTO RECYCLE** **UNI Naturel 26** Print pattern **CHARLOTTE Melon 22**

Heavy canvas fabric, the Siento recyclé is woven with mixed dyed yarns which gives this textured linen effect. The warp and weft are made with recycled polyester yarns. Usable as a printing support. Please note : the background can modify the coloristic rendering. NOT USABLE printed fabric on seat

### Technical properties



Flame retardant



Thermal



Acoustic



Recycled fabrics

**Applications** Roman blinds - Panel curtains - Bedspreads - Valences - Seating - Bed runners - Curtains - Cushions

**Composition** 100% FR polyester including 95% recycled material

**Weight** 370 g/m<sup>2</sup>

**Width** 280 cm

**Fabric direction** Room high or standard direction

**Fitting** ↔ 0.0 cm ↓ 0.0 cm

**Maintenance advice**

**Label** France Terre Textile / OEKO-TEX STANDARD 100 Recyclé

**Minimum order** 25 linear(s) meter(s)

## Technical characteristics

Flame retardant	M1 / B1 / IMO PASS / UNI 8456 / 9174 Classe Uno
Acoustic	Noise reduction coefficient (NRC) : <b>0.73</b>
Optical index	Light reflexion : <b>52 %</b> Light absorption : <b>40 %</b> Light transmission : <b>8 %</b>
Thermal index	Solar reflexion : <b>61 %</b> Solar absorption : <b>24 %</b> Solar transmission : <b>15 %</b> UV transmission : <b>3 %</b> Gtot : <b>Gt 37 % Fc 63 %</b>
Resilience	Lightfastness (units Class/8) <b>6</b> Pilling <b>4-5</b> Dimensional Stability (%) Warp <b>-1,5</b> Weft <b>-1,5</b> Martindale (Cycles) <b>90000</b> Breaking Elongation Warp <b>41</b> Weft <b>44</b> Breaking load (daN) Warp <b>180</b> Weft <b>150</b>

# Print pattern CHARLOTTE



CHARLOTTE Absinthe  
132



CHARLOTTE Anis 62



CHARLOTTE Beige 63



CHARLOTTE Bouteille  
101



CHARLOTTE Brume 47



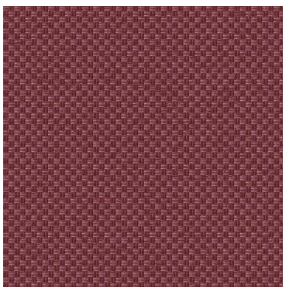
CHARLOTTE Cerise 66



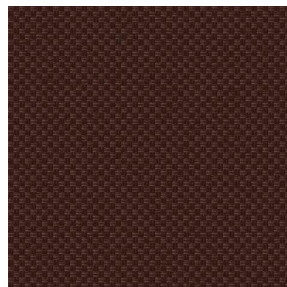
CHARLOTTE Chamois  
111



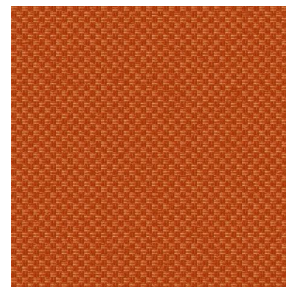
CHARLOTTE Chataigne  
55



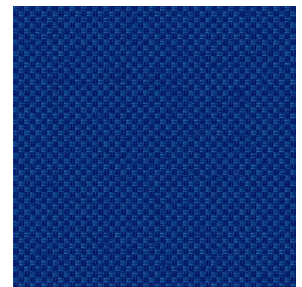
CHARLOTTE Chaudron  
118



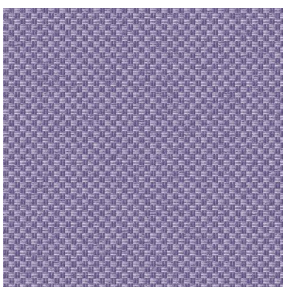
CHARLOTTE Chocolat  
70



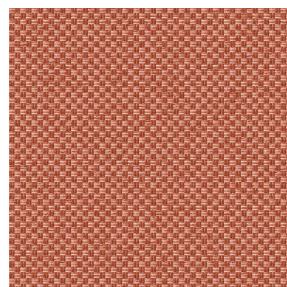
CHARLOTTE Citrouille  
136



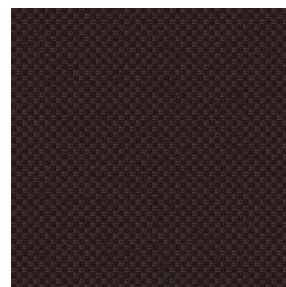
CHARLOTTE Cobalt 114



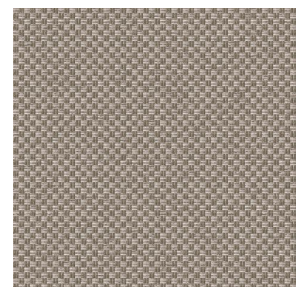
CHARLOTTE Crepuscule  
45



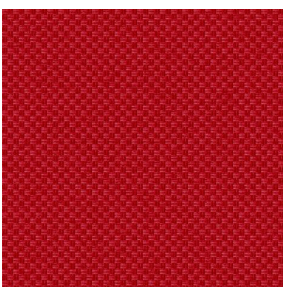
CHARLOTTE Cuivre 50



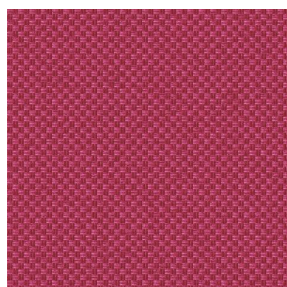
CHARLOTTE Ebene 124



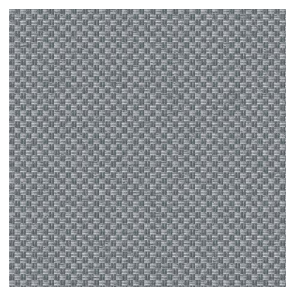
CHARLOTTE Ficelle 09



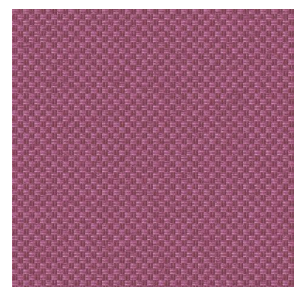
CHARLOTTE Fiesta 131



CHARLOTTE Grenat 56



CHARLOTTE Gris 97



CHARLOTTE Hortensia  
134

**drapilux**  
By Sotexpro

DRAPILUX GmbH - Hofenstraße 3, 77694 Kehl - Deutschland

Non-contractual photos and colors - Indicative fitting - Fitting may vary depending on support selected

# Print pattern CHARLOTTE



CHARLOTTE Lagon 110



CHARLOTTE Lilas 19



CHARLOTTE Lin 11



CHARLOTTE Maïs 37



CHARLOTTE Menthe  
122



CHARLOTTE Mordore  
133



CHARLOTTE Mousse 92



CHARLOTTE Noir 10



CHARLOTTE Océan 91



CHARLOTTE Opéra 104



CHARLOTTE Orange 15



CHARLOTTE Pacifique  
54



CHARLOTTE Prairie 125



CHARLOTTE Printemps  
130



CHARLOTTE Sienne 29



CHARLOTTE Souris 31



CHARLOTTE Terre 107



CHARLOTTE Tilleul 103



CHARLOTTE Vieux rose  
64



CHARLOTTE Violine 105

**drapilux**  
By Sotexpro

DRAPILUX GmbH - Hafenstraße 3, 77694 Kehl - Deutschland

Non-contractual photos and colors - Indicative fitting - Fitting may vary depending on support selected