



SIENTO RECYCLE UNI Lin 11
Printing support



NAHIA CURRY 184
Print pattern

Printing support **SIENTO RECYCLE UNI Lin 11** Print pattern **NAHIA CURRY 184**

Heavy canvas fabric, the Siento recyclé is woven with mixed dyed yarns which gives this textured linen effect. The warp and weft are made with recycled polyester yarns. Usable as a printing support. Please note : the background can modify the coloristic rendering. NOT USED printed fabric on seat The proportion of recycled material and the manufacturing process of the yarn used to weave this quality can cause slight color variations between different batches of fabric

Technical properties



Flame retardant



Thermal



Acoustic



Recycled fabrics

Applications Bedspreads - Valences - Seating - Bed runners - Curtains - Cushions - Roman blinds - Panel curtains

Composition 100% FR polyester including 95% recycled material

Weight 370 g/m²

Width 280 cm

Fabric direction Room high or standard direction

Fitting ↔ 64.0 cm ↓ 70.0 cm

Maintenance advice

Label France Terre Textile / OEKO-TEX STANDARD 100 Recyclé

Minimum order 25 linear(s) meter(s)



Visual not taking into account the printing medium, the final rendering may vary according to the chosen medium.

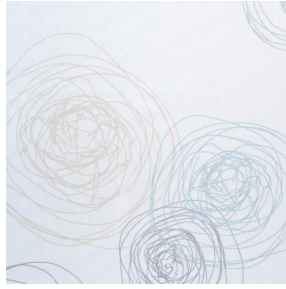
Technical characteristics

Flame retardant	M1 / B1 / IMO PASS / UNI 8456 / 9174 Classe Uno
Acoustic	Noise reduction coefficient (NRC) : 0.73
Optical index	Light reflexion : 41 % Light absorption : 51 % Light transmission : 8 %
Thermal index	Solar reflexion : 55 % Solar absorption : 29 % Solar transmission : 16 % UV transmission : 5 % Gtot : Gt 39 % Fc 66 %
Resilience	Lightfastness (units Class/8) 6 Pilling 4-5 Dimensional Stability (%) Warp -1,5 Weft -1,5 Martindale (Cycles) 90000 Breaking Elongation Warp 41 Weft 44 Breaking load (daN) Warp 180 Weft 150

Print pattern NAHIA



NAHIA TURQUOISE 53



NAHIA OR 94