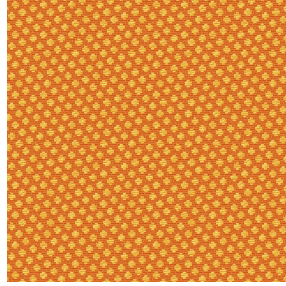
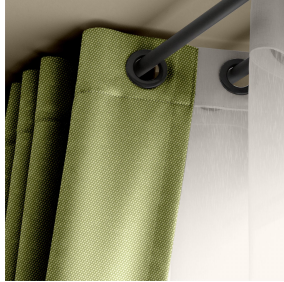




**SIENTO RECYCLE UNI Lin 11**  
Printing support



**GONIDIE Brique 42**  
Print pattern



Visual not taking into account the printing medium, the final rendering may vary according to the chosen medium.



## Printing support **SIENTO RECYCLE UNI Lin 11** Print pattern **GONIDIE Brique 42**

Heavy canvas fabric, the Siento recyclé is woven with mixed dyed yarns which gives this textured linen effect. The warp and weft are made with recycled polyester yarns. Usable as a printing support. Please note : the background can modify the coloristic rendering.

### Technical properties



Flame retardant



Thermal



Acoustic



Recycled fabrics

**Applications** Roman blinds - Panel curtains - Bedspreads - Valences - Seating - Bed runners - Curtains - Cushions

**Composition** 80% recycled polyester FR / 20% polyester FR

**Weight** 330 g/m<sup>2</sup>

**Width** 290 cm

**Fabric direction** Room high or standard direction

**Fitting** ↔ 0.0 cm ↑ 0.0 cm

**Maintenance advice**

**Label** France Terre Textile / OEKO-TEX STANDARD 100 Recyclé

**Minimum order** 25 linear(s) meter(s)

## Technical characteristics

Flame retardant	M1 / B1 / IMO PASS / UNI 8456 / 9174 Classe Uno
Acoustic	Noise reduction coefficient (NRC) : <b>0.73</b>
Optical index	Light reflexion : <b>41 %</b> Light absorption : <b>51 %</b> Light transmission : <b>8 %</b>
Thermal index	Solar reflexion : <b>55 %</b> Solar absorption : <b>29 %</b> Solar transmission : <b>16 %</b> UV transmission : <b>5 %</b> Gtot : <b>Gt 39 % Fc 66 %</b>
Resilience	Lightfastness (units Class/8) <b>6</b> Pilling <b>4-5</b> Dimensional Stability (%) Warp <b>-1,5</b> Weft <b>-1,5</b> Martindale (Cycles) <b>90000</b> Breaking Elongation Warp <b>41</b> Weft <b>44</b> Breaking load (daN) Warp <b>180</b> Weft <b>150</b>

# Print pattern GONIDIE



GONIDIE Souris 31



GONIDIE Beige 63



GONIDIE Citrouille 136



GONIDIE Glacier 43



GONIDIE Noir 10



GONIDIE Céladon 135



GONIDIE Anis 62



GONIDIE Perle 96



GONIDIE Mousse 92



GONIDIE Tourterelle  
138



GONIDIE Opéra 104



GONIDIE Pacifique 54



GONIDIE Brun 23



GONIDIE Crème 32



GONIDIE Taupe 95



GONIDIE Lin 11



GONIDIE Lierre 124



GONIDIE Bergamote  
121



GONIDIE Hortensia 134



GONIDIE Vieux rose 64

**drapilux**  
By Sotexpro

DRAPILUX GmbH - Hofenstraße 3, 77694 Kehl - Deutschland

Non-contractual photos and colors - Indicative fitting - Fitting may vary depending on support selected

## Print pattern GONIDIE



GONIDIE Emeraude 88



GONIDIE Fuchsia 33



GONIDIE Ebene 113



GONIDIE Ficelle 09