



**SATIN BPI 00**  
Printing support



**MELODY Lin 11**  
Print pattern



# Printing support **SATIN BPI 00** Print pattern **MELODY Lin 11**

Light-filtering support for digital printing.

## Technical properties



Flame retardant

**Applications** Roman blinds - Panel curtains - Curtains

**Composition** 100% FR polyester

**Weight** 220 g/m<sup>2</sup>

**Width** 280 cm

**Fabric direction** Room High Direction

**Fitting** ↔ 0.0 cm ↓ 0.0 cm

**Maintenance advice**

**Label** France Terre Textile / OEKO-TEX STANDARD 100

**Minimum order** 25 linear(s) meter(s)



Visual not taking into account the printing medium, the final rendering may vary according to the chosen medium.

## Technical characteristics

Flame retardant

M1 / B1 / IMO PASS

Resilience

Dimensional Stability (%)

Warp -1

Weft -1

Breaking Elongation

Warp 42

Weft 22

Breaking load (daN)

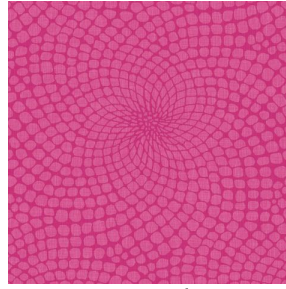
Warp 160

Weft 140

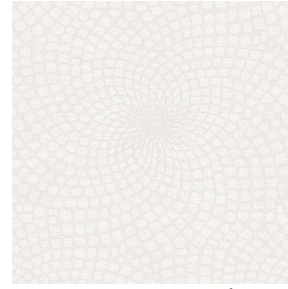
# Print pattern MELODY



MELODY Vanille 51



MELODY Fuchsia 33



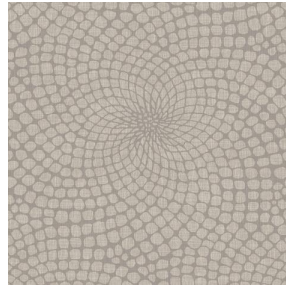
MELODY Naturel 26



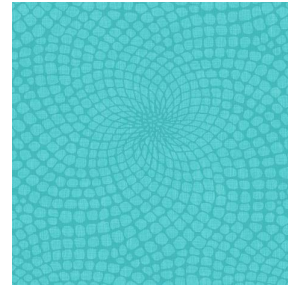
MELODY Anis 62



MELODY Orange 15



MELODY Ficelle 09



MELODY Turquoise 53



MELODY Acier 18

**drapilux**  
By Sotexpro

DRAPILUX GmbH - Hafenstraße 3, 77694 Kehl - Deutschland

Non-contractual photos and colors - Indicative fitting - Fitting may vary depending on support selected