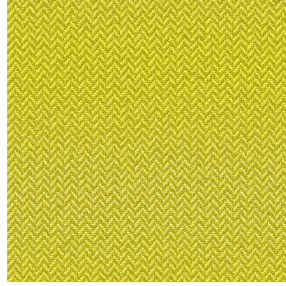




SATIN BPI 00
Printing support



SCOURTIN Bergamote 121
Print pattern



Visual not taking into account the printing medium, the final rendering may vary according to the chosen medium.

Printing support **SATIN BPI 00** Print pattern **SCOURTIN Bergamote 121**

Light-filtering support for digital printing.

Technical properties



Flame retardant

Applications Roman blinds - Panel curtains - Curtains

Composition 100% FR polyester

Weight 220 g/m²

Width 280 cm

Fabric direction Room High Direction

Fitting ↔ 0.0 cm ↓ 0.0 cm

Maintenance advice     

Label France Terre Textile / OEKO-TEX STANDARD 100

Minimum order 25 linear(s) meter(s)

Technical characteristics

Flame retardant

M1 / B1 / IMO PASS

Resilience

Dimensional Stability (%)

Warp -1

Weft -1

Breaking Elongation

Warp 42

Weft 22

Breaking load (daN)

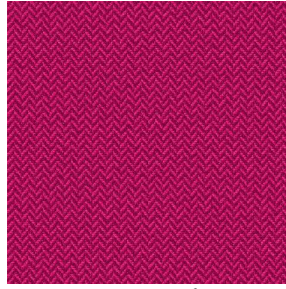
Warp 160

Weft 140

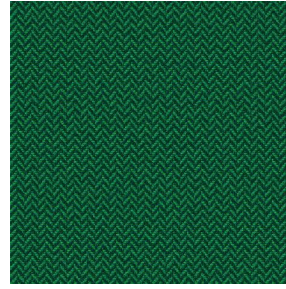
Print pattern SCOURTIN



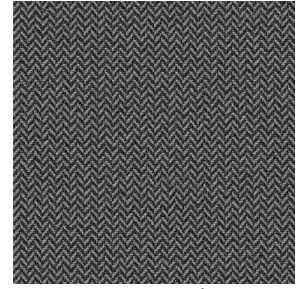
SCOURTIN Beige 63



SCOURTIN Fuchsia 33



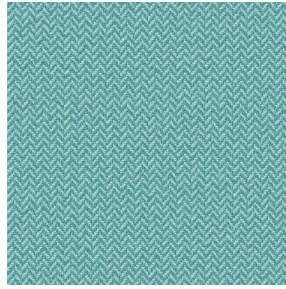
SCOURTIN Sapin 126



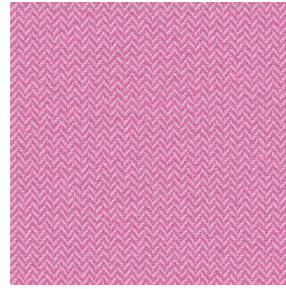
SCOURTIN Anthracite
38



SCOURTIN Violine 105



SCOURTIN Pacifique 54



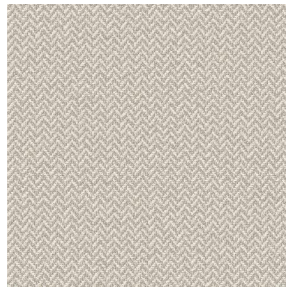
SCOURTIN Rose 129



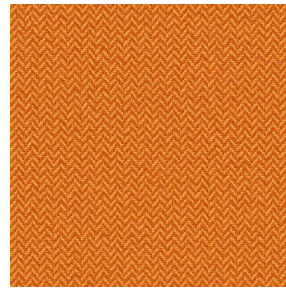
SCOURTIN Blanc 01



SCOURTIN Lin 11



SCOURTIN Naturel 26



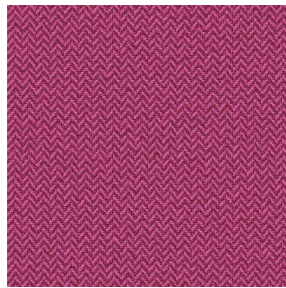
SCOURTIN Citrouille
136



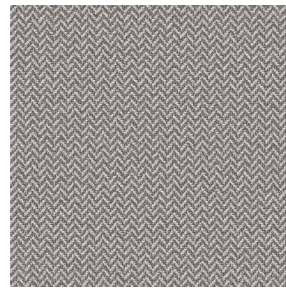
SCOURTIN Turquoise 53



SCOURTIN Brun 23



SCOURTIN Hortensia
134



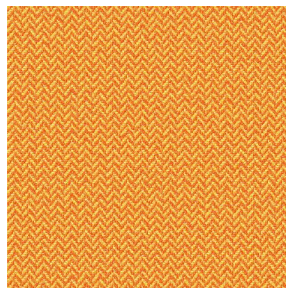
SCOURTIN Orage 123



SCOURTIN Rubis 59



SCOURTIN Ficelle 09



SCOURTIN Maïs 37



SCOURTIN Céladon 135



SCOURTIN Ebene 113

drapilux
By Sotexpro

DRAPILUX GmbH - Hofenstraße 3, 77694 Kehl - Deutschland

Non-contractual photos and colors - Indicative fitting - Fitting may vary depending on support selected

Print pattern SCOURTIN



SCOURTIN Tourterelle
138



SCOURTIN Titanium 98



SCOURTIN Lagon 110



SCOURTIN Gris 97