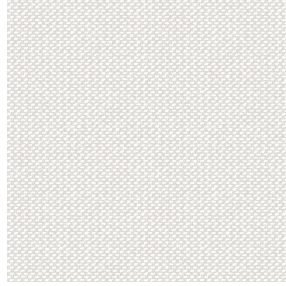




**SATIN BPI 00**  
Printing support



**METIS Perle 96**  
Print pattern



## Printing support **SATIN BPI 00** Print pattern **METIS Perle 96**

Light-filtering support for digital printing.

### Technical properties



Flame retardant

**Applications** Roman blinds - Panel curtains - Curtains

**Composition** 100% FR polyester

**Weight** 220 g/m<sup>2</sup>

**Width** 140 cm

**Fabric direction** Standard Direction

**Fitting** ↔ 0.0 cm ↓ 0.0 cm

**Maintenance advice**     

**Label** France Terre Textile / OEKO-TEX STANDARD 100

**Minimum order** 25 linear(s) meter(s)



Visual not taking into account the printing medium, the final rendering may vary according to the chosen medium.

## Technical characteristics

Flame retardant

M1 / B1 / IMO PASS

Resilience

Dimensional Stability (%)

Warp -1

Weft -1

Breaking Elongation

Warp 42

Weft 22

Breaking load (daN)

Warp 160

Weft 140

# Print pattern METIS



METIS Gentiane 16



METIS Absinthe 132



METIS Noir 10



METIS Citrouille 136



METIS Chanvre 72



METIS Gris 97



METIS Bergamote 121



METIS Violine 105



METIS Céladon 135



METIS Lin 11



METIS Sienne 29



METIS Lagon 110



METIS Cobalt 114



METIS Framboise 81



METIS Abricot 08



METIS Chamois 111



METIS Ivoire 115



METIS Ficelle 09



METIS Rose 129



METIS Parme 79

**drapilux**  
By Sotexpro

DRAPILUX GmbH - Hofenstraße 3, 77694 Kehl - Deutschland

Non-contractual photos and colors - Indicative fitting - Fitting may vary depending on support selected

## Print pattern METIS



METIS Cactus 36



METIS Hortensia 134



METIS Naturel 26



METIS Chaudron 118