



SATIN BPI 00
Printing support



SCOURTIN Gris 97
Print pattern



Printing support **SATIN BPI 00** Print pattern **SCOURTIN Gris 97**

Light-filtering support for digital printing.

Technical properties



Flame retardant

Applications Roman blinds - Panel curtains - Curtains

Composition 100% FR polyester

Weight 220 g/m²

Width 140 cm

Fabric direction Standard Direction

Fitting ↔ 0.0 cm ↓ 0.0 cm

Maintenance advice     

Label France Terre Textile / OEKO-TEX STANDARD 100

Minimum order 25 linear(s) meter(s)



Visual not taking into account the printing medium, the final rendering may vary according to the chosen medium.

Technical characteristics

Flame retardant

M1 / B1 / IMO PASS

Resilience

Dimensional Stability (%)

Warp -1

Weft -1

Breaking Elongation

Warp 42

Weft 22

Breaking load (daN)

Warp 160

Weft 140

Print pattern SCOURTIN



SCOURTIN Beige 63



SCOURTIN Fuchsia 33



SCOURTIN Sapin 126



SCOURTIN Bergamote
121



SCOURTIN Anthracite
38



SCOURTIN Violine 105



SCOURTIN Pacifique 54



SCOURTIN Rose 129



SCOURTIN Blanc 01



SCOURTIN Lin 11



SCOURTIN Naturel 26



SCOURTIN Citrouille
136



SCOURTIN Turquoise 53



SCOURTIN Brun 23



SCOURTIN Hortensia
134



SCOURTIN Orage 123



SCOURTIN Rubis 59



SCOURTIN Ficelle 09



SCOURTIN Maïs 37



SCOURTIN Céladon 135

drapilux
By Sotexpro

DRAPILUX GmbH - Hofenstraße 3, 77694 Kehl - Deutschland

Non-contractual photos and colors - Indicative fitting - Fitting may vary depending on support selected

Print pattern SCOURTIN



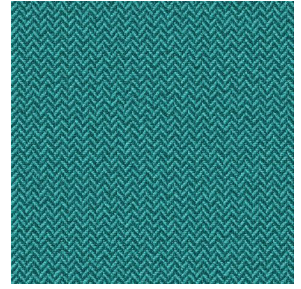
SCOURTIN Ebene 113



SCOURTIN Tourterelle
138



SCOURTIN Titanium 98



SCOURTIN Lagon 110