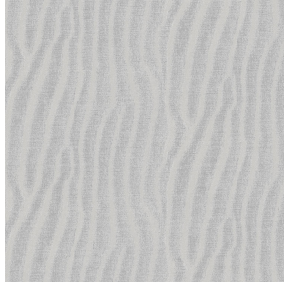




**POL BPI 00**  
Printing support



**SABLE Souris 31**  
Print pattern



## Printing support **POL BPI 00** Print pattern **SABLE Souris 31**

Print support.

### Technical properties



Flame retardant

**Applications** Bedspreads - Lining - Bed runners


**Composition** 100% polyester

**Weight** 80 g/m<sup>2</sup>

**Width** 280 cm

**Fabric direction** Room High Direction

**Fitting** ↔ 0.0 cm ↓ 0.0 cm

**Maintenance advice**     

**Label** France Terre Textile

**Minimum order** 25 linear(s) meter(s)



Visual not taking into account the printing medium, the final rendering may vary according to the chosen medium.

## Technical characteristics

Flame retardant	NF 12952	
Optical index	Light reflexion :	0 %
	Light absorption :	0 %
	Light transmission :	0 %
Thermal index	Solar reflexion :	0 %
	Solar absorption :	0 %
	Solar transmission :	0 %
	UV transmission :	0 %
	Gtot :	<b>Gt 0 % Fc 0 %</b>
Resilience	Lightfastness (units Class/8)	0
	Martindale (Cycles)	0
	Breaking Elongation	
	Warp	0
	Weft	0
	Breaking load (daN)	
	Warp	0
Weft	0	

## Print pattern SABLE



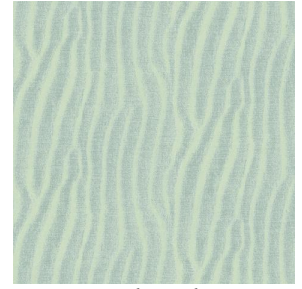
SABLE Lin 11



SABLE Rose 129



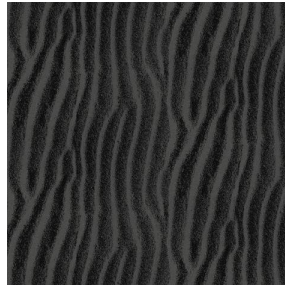
SABLE Sable 67



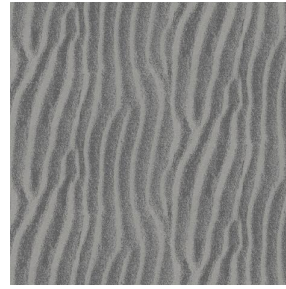
SABLE Absinthe 132



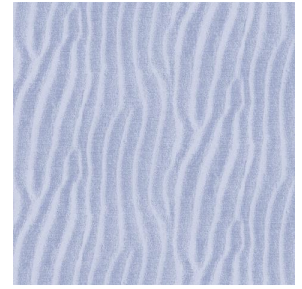
SABLE Ivoire 115



SABLE Noir 10



SABLE Gris 97



SABLE Jasmin 74

**drapilux**  
By Sotexpro

DRAPILUX GmbH - Hafenstraße 3, 77694 Kehl - Deutschland

Non-contractual photos and colors - Indicative fitting - Fitting may vary depending on support selected