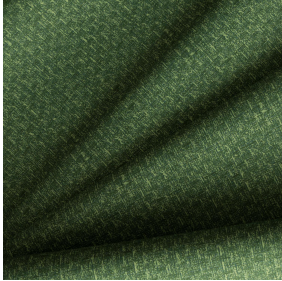




**POL BPI 00**  
Printing support



**RUSTIC Mousse 92**  
Print pattern



## Printing support **POL BPI 00** Print pattern **RUSTIC Mousse 92**

Print support.

### Technical properties



Flame retardant

**Applications** Bedspreads - Lining - Bed runners

**Composition** 100% polyester

**Weight** 80 g/m<sup>2</sup>

**Width** 280 cm

**Fabric direction** Room High Direction

**Fitting** ↔ 0.0 cm ↓ 0.0 cm

**Maintenance advice**     

**Label** France Terre Textile

**Minimum order** 25 linear(s) meter(s)



Visual not taking into account the printing medium, the final rendering may vary according to the chosen medium.

## Technical characteristics

Flame retardant

NF 12952

Optical index

Light reflexion : 0 %

Light absorption : 0 %

Light transmission : 0 %

Thermal index

Solar reflexion : 0 %

Solar absorption : 0 %

Solar transmission : 0 %

UV transmission : 0 %

Gtot : **Gt 0 % Fc 0 %**

Resilience

Lightfastness (units Class/8) 0

Martindale (Cycles) 0

Breaking Elongation

Warp 0

Weft 0

Breaking load (daN)

Warp 0

Weft 0

# Print pattern RUSTIC



RUSTIC Lin 11



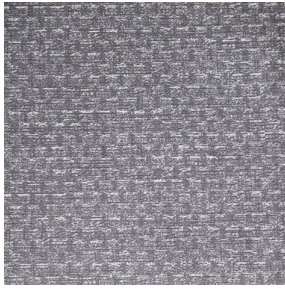
RUSTIC Naturel 26



RUSTIC Sienne 29



RUSTIC Terre 107



RUSTIC Taupe 95



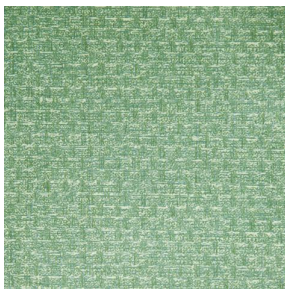
RUSTIC Titanium 98



RUSTIC Hortensia 134



RUSTIC Bergamote 121



RUSTIC Prairie 125



RUSTIC Glacier 43



RUSTIC Bleu 41