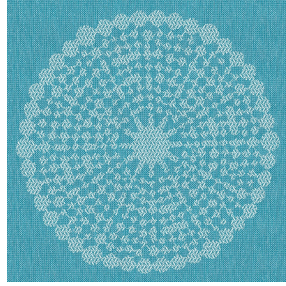




**POL BPI 00**  
Printing support



**ANGELE Turquoise 53**  
Print pattern



# Printing support **POL BPI 00** Print pattern **ANGELE Turquoise 53**

Print support.

## Technical properties



Flame retardant

**Applications** Bedspreads - Lining - Bed runners

**Composition** 100% polyester

**Weight** 80 g/m<sup>2</sup>

**Width** 280 cm

**Fabric direction** Room High Direction

**Fitting** ↔ 30.0 cm ↓ 30.0 cm

**Maintenance advice**     

**Label** France Terre Textile

**Minimum order** 25 linear(s) meter(s)



Visual not taking into account the printing medium, the final rendering may vary according to the chosen medium.

## Technical characteristics

Flame retardant

NF 12952

Optical index

Light reflexion : 0 %

Light absorption : 0 %

Light transmission : 0 %

Thermal index

Solar reflexion : 0 %

Solar absorption : 0 %

Solar transmission : 0 %

UV transmission : 0 %

Gtot : **Gt 0 % Fc 0 %**

Resilience

Lightfastness (units Class/8) 0

Martindale (Cycles) 0

Breaking Elongation

Warp 0

Weft 0

Breaking load (daN)

Warp 0

Weft 0

# Print pattern ANGELE



ANGELE Océan 91



ANGELE Taupe 95



ANGELE Anis 62



ANGELE Fuchsia 33



ANGELE Orange 15



ANGELE Prune 84



ANGELE Sable 67



ANGELE Vert 24

**drapilux**  
By Sotexpro

DRAPILUX GmbH - Hofenstraße 3, 77694 Kehl - Deutschland

Non-contractual photos and colors - Indicative fitting - Fitting may vary depending on support selected