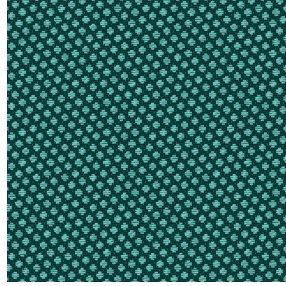




POL 00
Printing support



GONIDIE Emeraude 88
Print pattern



Printing support POL 00 Print pattern GONIDIE Emeraude 88

Print support.

Technical properties



Flame retardant

Applications Bedspreads - Lining - Bed runners




Composition 100% polyester

Weight 80 g/m²

Width 180 cm

Fabric direction Standard Direction

Fitting ↔ 0.0 cm ↓ 0.0 cm

Maintenance advice     

Label France Terre Textile

Minimum order 25 linear(s) meter(s)



Visual not taking into account the printing medium, the final rendering may vary according to the chosen medium.

Technical characteristics

Flame retardant	NF 12952	
Optical index	Light reflexion :	0 %
	Light absorption :	0 %
	Light transmission :	0 %
Thermal index	Solar reflexion :	0 %
	Solar absorption :	0 %
	Solar transmission :	0 %
	UV transmission :	0 %
	Gtot :	Gt 0 % Fc 0 %
Resilience	Lightfastness (units Class/8)	0
	Martindale (Cycles)	0
	Breaking Elongation	
	Warp	0
	Weft	0
	Breaking load (daN)	
Warp	0	
Weft	0	

Print pattern GONIDIE



GONIDIE Souris 31



GONIDIE Beige 63



GONIDIE Citrouille 136



GONIDIE Glacier 43



GONIDIE Noir 10



GONIDIE Céladon 135



GONIDIE Anis 62



GONIDIE Perle 96



GONIDIE Mousse 92



GONIDIE Tourterelle
138



GONIDIE Brique 42



GONIDIE Opéra 104



GONIDIE Pacifique 54



GONIDIE Brun 23



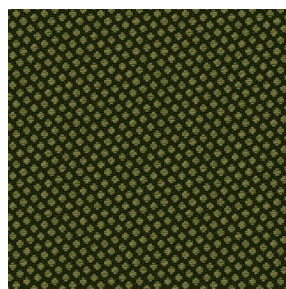
GONIDIE Crème 32



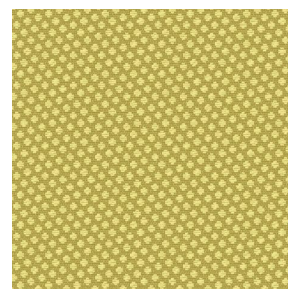
GONIDIE Taupe 95



GONIDIE Lin 11



GONIDIE Lierre 124



GONIDIE Bergamote
121



GONIDIE Hortensia 134

drapilux
By Sotexpro

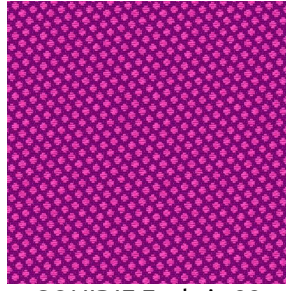
DRAPILUX GmbH - Hofenstraße 3, 77694 Kehl - Deutschland

Non-contractual photos and colors - Indicative fitting - Fitting may vary depending on support selected

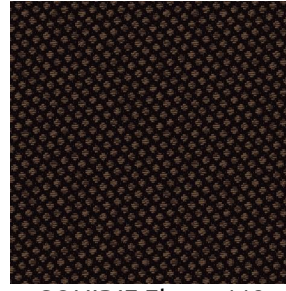
Print pattern GONIDIE



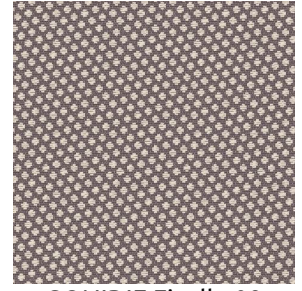
GONIDIE Vieux rose 64



GONIDIE Fuchsia 33



GONIDIE Ebene 113



GONIDIE Ficelle 09

drapilux
By Sotexpro

DRAPILUX GmbH - Hafenstraße 3, 77694 Kehl - Deutschland

Non-contractual photos and colors - Indicative fitting - Fitting may vary depending on support selected