



POL 00  
Printing support



SCOURTIN Brun 23  
Print pattern



## Printing support POL 00 Print pattern SCOURTIN Brun 23

Print support.

### Technical properties



Flame retardant

**Applications** Bedspreads - Lining - Bed runners

**Composition** 100% polyester

**Weight** 80 g/m<sup>2</sup>

**Width** 180 cm

**Fabric direction** Standard Direction

**Fitting** ↔ 0.0 cm ↓ 0.0 cm

**Maintenance advice**     

**Label** France Terre Textile

**Minimum order** 25 linear(s) meter(s)



Visual not taking into account the printing medium, the final rendering may vary according to the chosen medium.

## Technical characteristics

Flame retardant	NF 12952	
Optical index	Light reflexion :	0 %
	Light absorption :	0 %
	Light transmission :	0 %
Thermal index	Solar reflexion :	0 %
	Solar absorption :	0 %
	Solar transmission :	0 %
	UV transmission :	0 %
	Gtot :	<b>Gt 0 % Fc 0 %</b>
Resilience	Lightfastness (units Class/8)	0
	Martindale (Cycles)	0
	Breaking Elongation	
	Warp	0
	Weft	0
	Breaking load (daN)	
	Warp	0
Weft	0	



# Print pattern SCOURTIN



SCOURTIN Beige 63



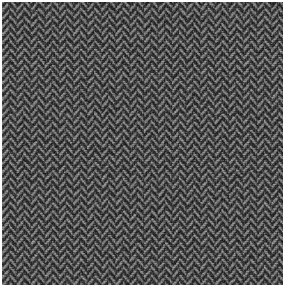
SCOURTIN Fuchsia 33



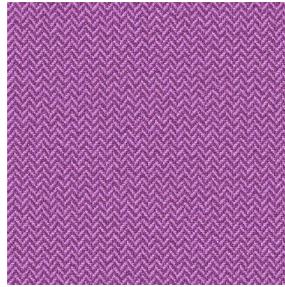
SCOURTIN Sapin 126



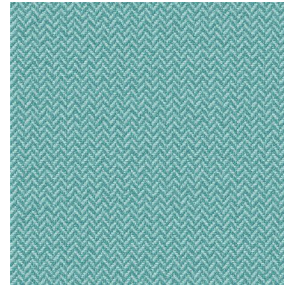
SCOURTIN Bergamote  
121



SCOURTIN Anthracite  
38



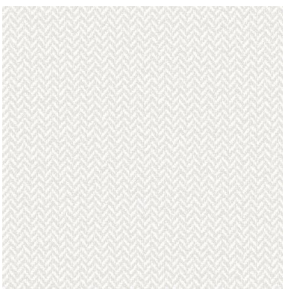
SCOURTIN Violette 105



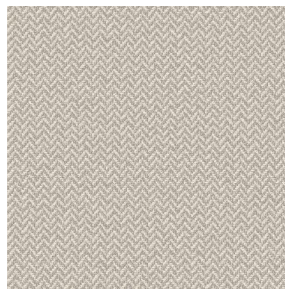
SCOURTIN Pacifique 54



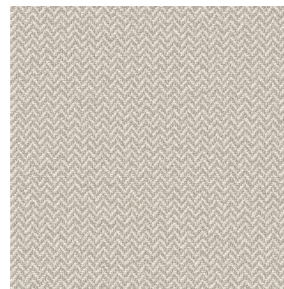
SCOURTIN Rose 129



SCOURTIN Blanc 01



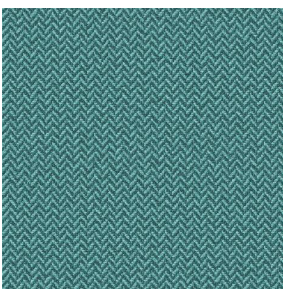
SCOURTIN Lin 11



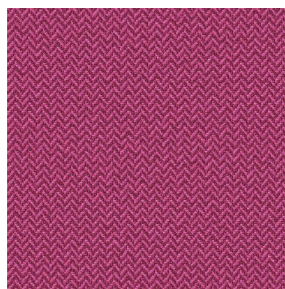
SCOURTIN Naturel 26



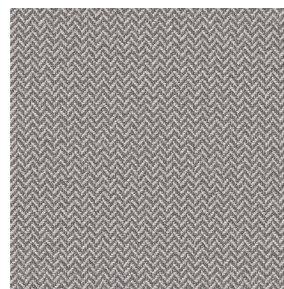
SCOURTIN Citrouille  
136



SCOURTIN Turquoise 53



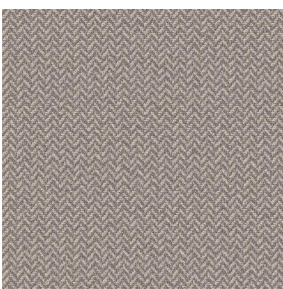
SCOURTIN Hortensia  
134



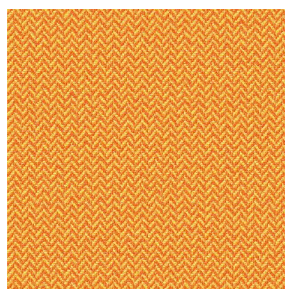
SCOURTIN Orange 123



SCOURTIN Rubis 59



SCOURTIN Ficelle 09



SCOURTIN Maïs 37



SCOURTIN Céladon 135



SCOURTIN Ebene 113

**drapilux**  
By Sotexpro

DRAPILUX GmbH - Hofenstraße 3, 77694 Kehl - Deutschland

Non-contractual photos and colors - Indicative fitting - Fitting may vary depending on support selected



## Print pattern SCOURTIN



SCOURTIN Tourterelle  
138



SCOURTIN Titanium 98



SCOURTIN Lagon 110



SCOURTIN Gris 97