



**OPAQ BPI 00**  
Printing support



**NAHIA CURRY 184**  
Print pattern

# Printing support **OPAQ BPI 00** Print pattern **NAHIA CURRY 184**

Unclassified blackout print support

## Technical properties

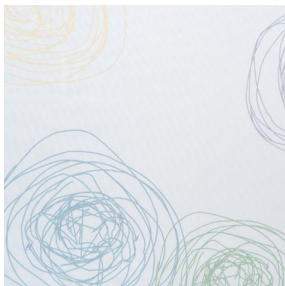
- Applications** Roman blinds - Panel curtains - Lining - Curtains
- Composition** 100% polyester with white flocked acrylic backing
- Weight** 280 g/m<sup>2</sup>
- Width** 280 cm
- Fabric direction** Room High Direction
- Fitting** ↔ 64.0 cm ↓ 70.0 cm
- Maintenance advice**
- Label**
- Minimum order** 25 linear(s) meter(s)

Visual not taking into account the printing medium, the final rendering may vary according to the chosen medium.

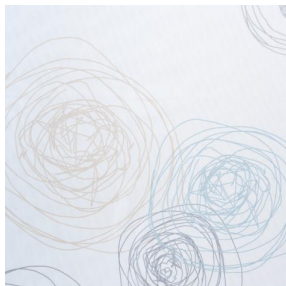
## Technical characteristics

Optical index	Light reflexion :	82 %
	Light absorption :	18 %
	Light transmission :	0 %
Thermal index	Solar reflexion :	74 %
	Solar absorption :	26 %
	Solar transmission :	0 %
	UV transmission :	0 %
	Gtot :	Gt 33 % Fc 55 %
Resilience	Lightfastness (units Class/8)	5
	Dimentional Stability (%)	
	Warp	-0,5
	Weft	0
	Breaking Elongation	
	Warp	26
	Weft	15
	Breaking load (daN)	
	Warp	62
	Weft	31

# Print pattern NAHIA



NAHIA TURQUOISE 53



NAHIA OR 94

**drapilux**  
By Sotexpro

DRAPILUX GmbH - Hafenstraße 3, 77694 Kehl - Deutschland

Non-contractual photos and colors - Indicative fitting - Fitting may vary depending on support selected