



OPAQ BPI 00
Printing support



ZELIE Taupe 95
Print pattern



Printing support **OPAQ BPI 00** Print pattern **ZELIE Taupe 95**

Unclassified blackout print support

Technical properties

Applications Roman blinds - Panel curtains - Lining - Curtains


Composition 100% polyester with white flocked acrylic backing

Weight 280 g/m²

Width 280 cm

Fabric direction Room High Direction

Fitting ↔ 130.0 cm ↓ 46.0 cm

Maintenance advice     

Label

Minimum order 25 linear(s) meter(s)

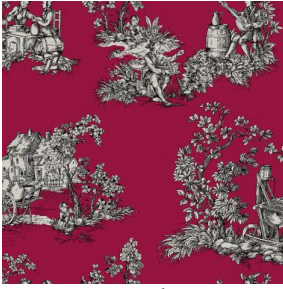


Visual not taking into account the printing medium, the final rendering may vary according to the chosen medium.

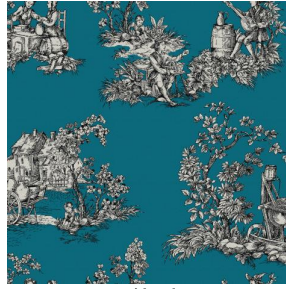
Technical characteristics

Optical index	Light reflexion :	82 %
	Light absorption :	18 %
	Light transmission :	0 %
Thermal index	Solar reflexion :	74 %
	Solar absorption :	26 %
	Solar transmission :	0 %
	UV transmission :	0 %
	Gtot :	Gt 33 % Fc 55 %
Resilience	Lightfastness (units Class/8)	5
	Dimensional Stability (%)	
	Warp	-0,5
	Weft	0
	Breaking Elongation	
	Warp	26
	Weft	15
Breaking load (daN)		
Warp	62	
Weft	31	

Print pattern ZELIE



ZELIE Rubis 59



ZELIE Céladon 135



ZELIE Prune 84