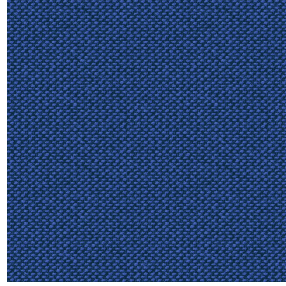




OPAQ BPI 00
Printing support



METIS Gentiane 16
Print pattern



Printing support **OPAQ BPI 00** Print pattern **METIS Gentiane 16**

Unclassified blackout print support

Technical properties

Applications Roman blinds - Panel curtains - Lining - Curtains

Composition 100% polyester with white flocked acrylic backing

Weight 280 g/m²

Width 280 cm

Fabric direction Room High Direction

Fitting ↔ 0.0 cm ↑ 0.0 cm

Maintenance advice     

Label

Minimum order 25 linear(s) meter(s)



Visual not taking into account the printing medium, the final rendering may vary according to the chosen medium.

Technical characteristics

Optical index

Light reflexion :	82 %
Light absorption :	18 %
Light transmission :	0 %

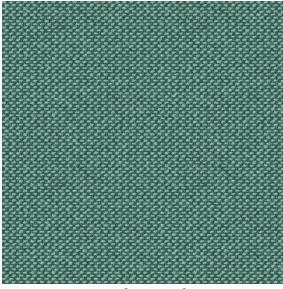
Thermal index

Solar reflexion :	74 %
Solar absorption :	26 %
Solar transmission :	0 %
UV transmission :	0 %
Gtot :	Gt 33 % Fc 55 %

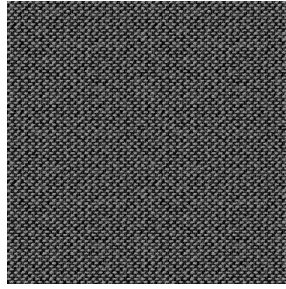
Resilience

Lightfastness (units Class/8)	5
Dimensional Stability (%)	
Warp	-0,5
Weft	0
Breaking Elongation	
Warp	26
Weft	15
Breaking load (daN)	
Warp	62
Weft	31

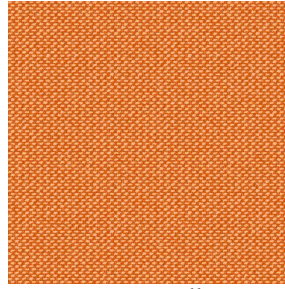
Print pattern METIS



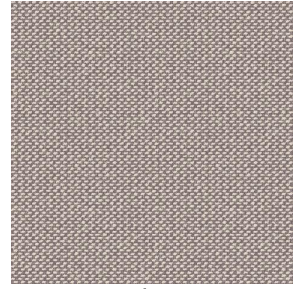
METIS Absinthe 132



METIS Noir 10



METIS Citrouille 136



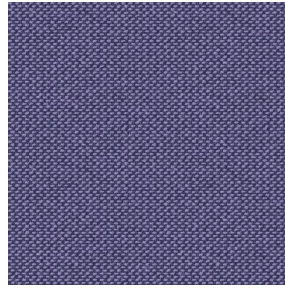
METIS Chanvre 72



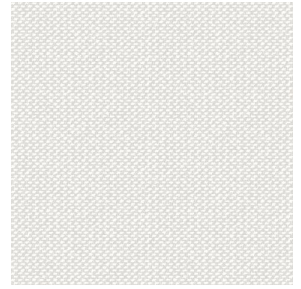
METIS Gris 97



METIS Bergamote 121



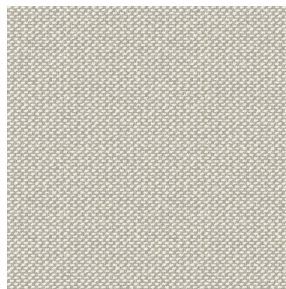
METIS Violine 105



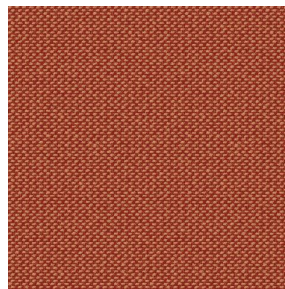
METIS Perle 96



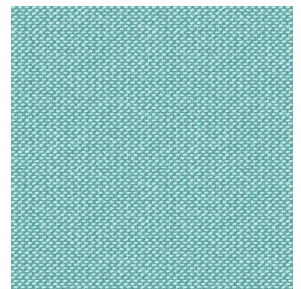
METIS Céladon 135



METIS Lin 11



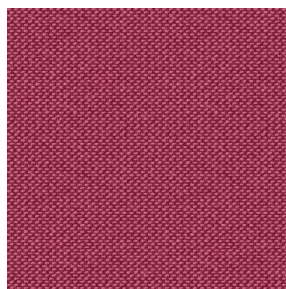
METIS Sienne 29



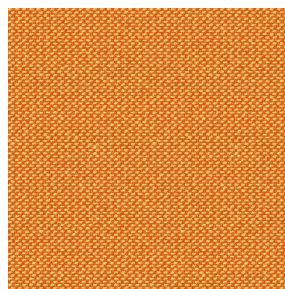
METIS Lagon 110



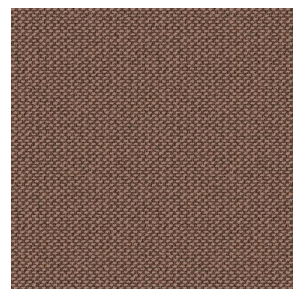
METIS Cobalt 114



METIS Framboise 81



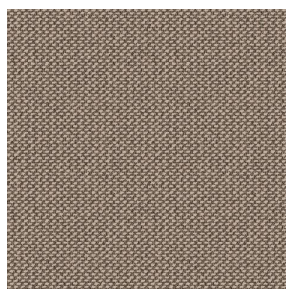
METIS Abricot 08



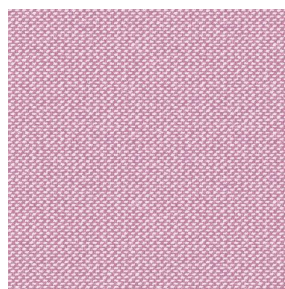
METIS Chamois 111



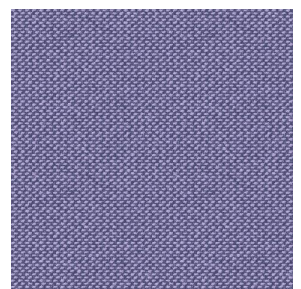
METIS Ivoire 115



METIS Ficelle 09



METIS Rose 129



METIS Parme 79

drapilux
By Sotexpro

DRAPILUX GmbH - Hofenstraße 3, 77694 Kehl - Deutschland

Non-contractual photos and colors - Indicative fitting - Fitting may vary depending on support selected

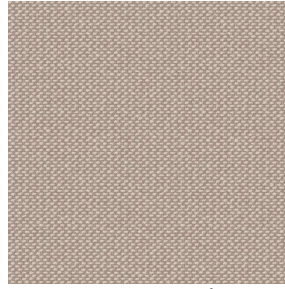
Print pattern METIS



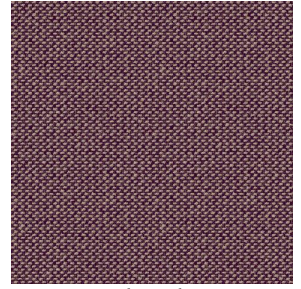
METIS Cactus 36



METIS Hortensia 134



METIS Naturel 26



METIS Chaudron 118