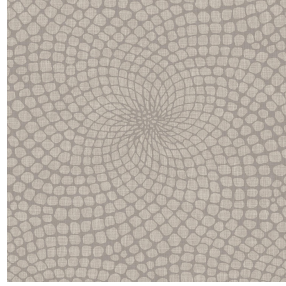




OPAQ BPI 00
Printing support



MELODY Ficelle 09
Print pattern



Printing support **OPAQ BPI 00** Print pattern **MELODY Ficelle 09**

Unclassified blackout print support

Technical properties

Applications Roman blinds - Panel curtains - Lining - Curtains

Composition 100% polyester with white flocked acrylic backing

Weight 280 g/m²

Width 280 cm

Fabric direction Room High Direction

Fitting ↔ 0.0 cm ↓ 0.0 cm

Maintenance advice     

Label

Minimum order 25 linear(s) meter(s)



Visual not taking into account the printing medium, the final rendering may vary according to the chosen medium.

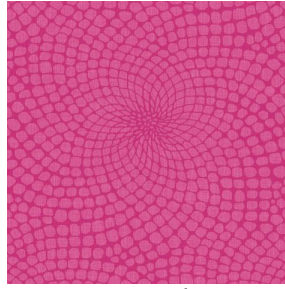
Technical characteristics

Optical index	Light reflexion :	82 %
	Light absorption :	18 %
	Light transmission :	0 %
Thermal index	Solar reflexion :	74 %
	Solar absorption :	26 %
	Solar transmission :	0 %
	UV transmission :	0 %
	Gtot :	Gt 33 % Fc 55 %
	Resilience	Lightfastness (units Class/8)
	Dimensional Stability (%)	
	Warp	-0,5
	Weft	0
	Breaking Elongation	
	Warp	26
	Weft	15
	Breaking load (daN)	
	Warp	62
	Weft	31

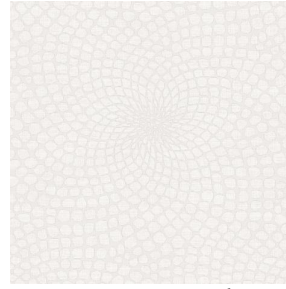
Print pattern MELODY



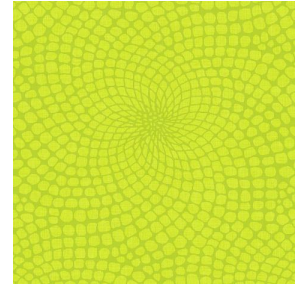
MELODY Vanille 51



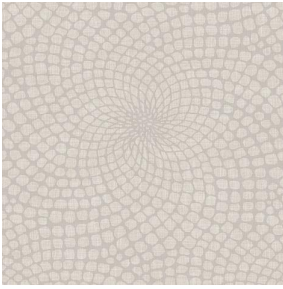
MELODY Fuchsia 33



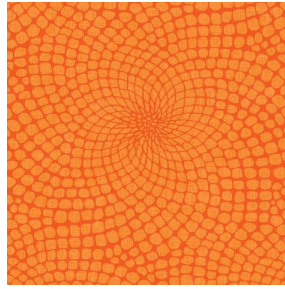
MELODY Naturel 26



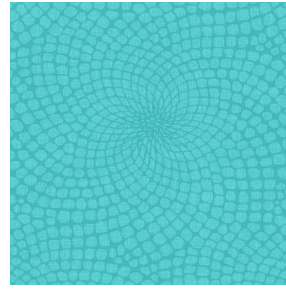
MELODY Anis 62



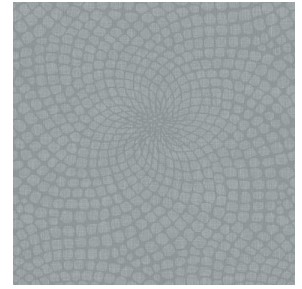
MELODY Lin 11



MELODY Orange 15



MELODY Turquoise 53



MELODY Acier 18

drapilux
By Sotexpro

DRAPILUX GmbH - Hafenstraße 3, 77694 Kehl - Deutschland

Non-contractual photos and colors - Indicative fitting - Fitting may vary depending on support selected